

CORSICANA, TEXAS

AL-5998 (FAA)

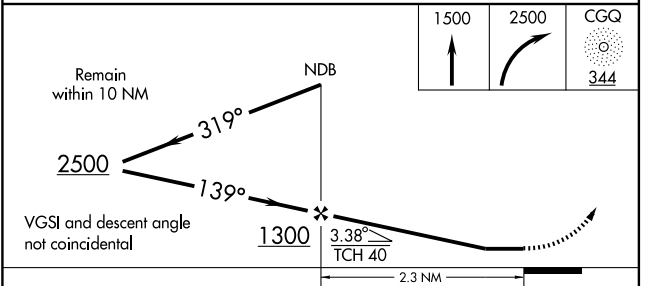
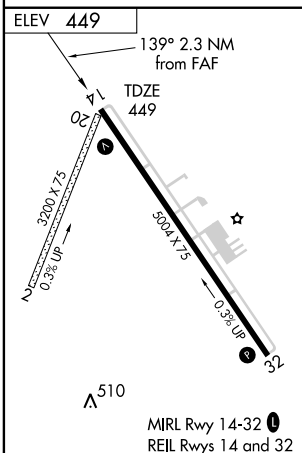
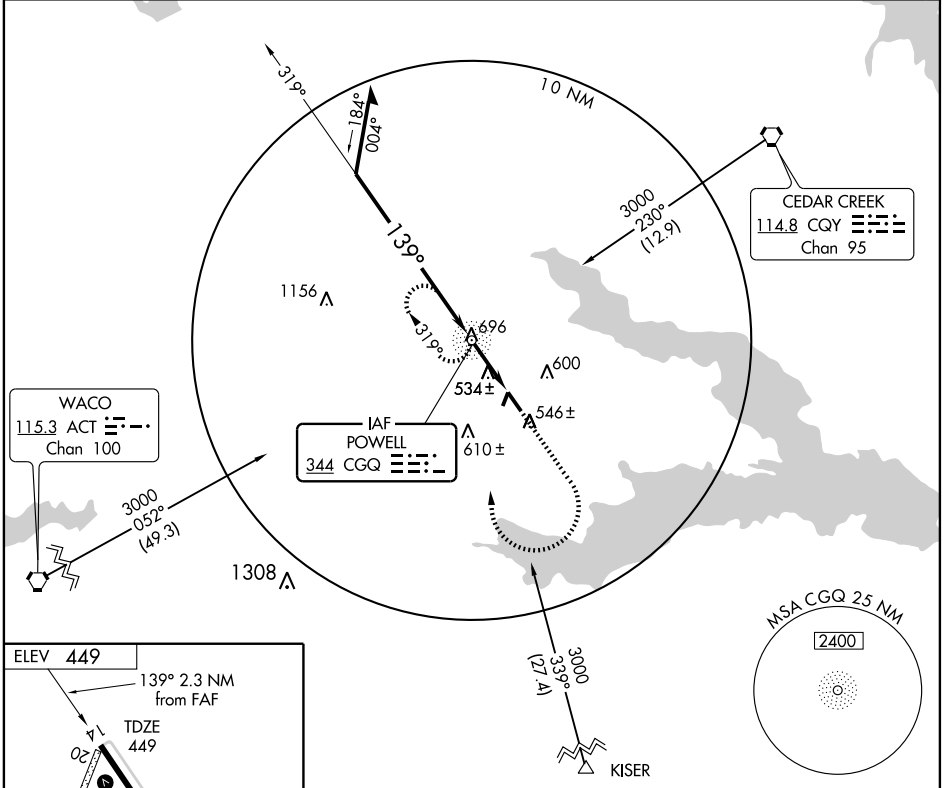
NDB CGQ 344	APP CRS 139°	Rwy Idg TDZE Apt Elev	5004 449 449
-----------------------	------------------------	-----------------------------	---

CORSICANA/
C. DAVID CAMPBELL FIELD-CORSICANA MUNI (CRS)

NDB RWY 14

▲ NA MISSED APPROACH: Climb to 1500 then climbing right turn to 2500 direct CGQ NDB and hold.

ASOS 120.675	FORT WORTH CENTER 135.25 265.1	UNICOM 122.8 (CTAF) 0
------------------------	--	--



FAF to MAP 2.3 NM					
Knots	60	90	120	150	180
Min:Sec	2:18	1:32	1:09	0:55	0:46

CATEGORY	A	B	C	D
S-14	860-1 411 (500-1)		860-1½ 411 (500-1½)	
CIRCLING	860-1 411 (500-1)	900-1 451 (500-1)	900-1½ 451 (500-1½)	1000-2 551 (600-2)

CORSICANA, TEXAS
Amdt 4 09239

CORSICANA/C. DAVID CAMPBELL FIELD-CORSICANA MUNI (CRS)
32°02'N - 96°24'W

NDB RWY 14

SC-2, 22 OCT 2009 to 19 NOV 2009

SC-2, 22 OCT 2009 to 19 NOV 2009