

RNAV (GPS) RWY 7

CLEMSON/ OCONEE COUNTY RGNL (CEU)

WAAS CH 97605 W07A	APP CRS 073°	Rwy Idg 4400 TDZE 892 Apt Elev 892
--	------------------------	--

▼ DME/DME RNP-0.3 NA.
▲ Visibility reduction by helicopters NA.
 If local altimeter setting not received, use Anderson altimeter setting and increase DA to 1262 and all MDAs 60 feet.

MISSED APPROACH: Climb to 3000 direct GUTQO and hold.

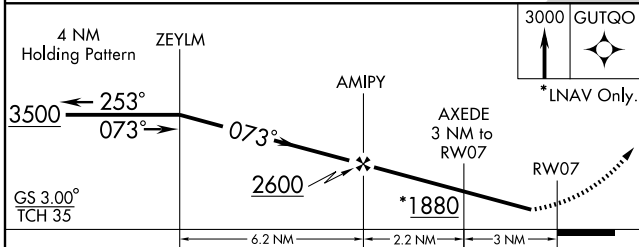
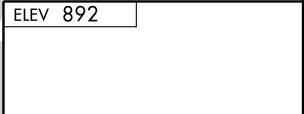
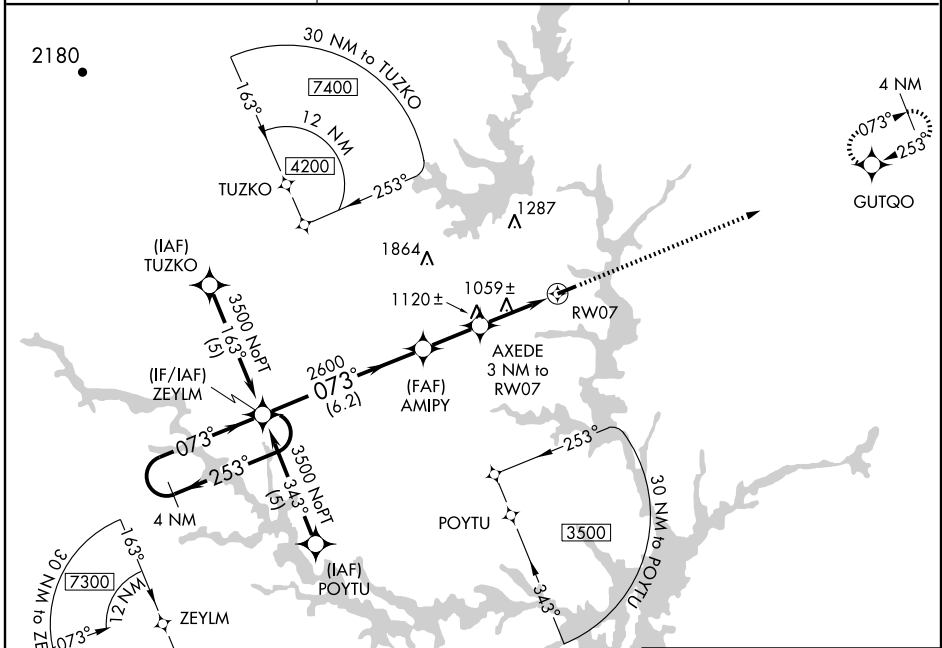
ASOS
119.275

GREER APP CON ★
118.8 385.4

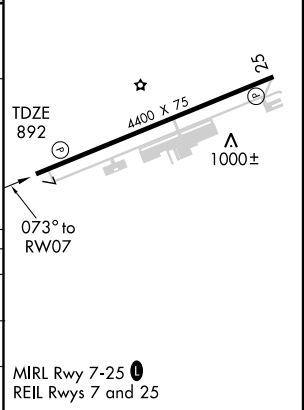
UNICOM
122.7 (CTAF) 0

SE-2, 22 OCT 2009 to 19 NOV 2009

SE-2, 22 OCT 2009 to 19 NOV 2009



CATEGORY	A	B	C	D
LPV DA	1214-1¼	322 (400-1¼)		NA
RNAV MDA	1320-1	428 (500-1)	1320-1¼ 428 (500-1¼)	NA
CIRCLING	1380-1	488 (500-1)	1380-1½ 488 (500-1½)	NA



MIRL Rwy 7-25 0
REIL Rwy 7 and 25