

CLEMSON, SOUTH CAROLINA

AL-5996 (FAA)

# RNAV (GPS) RWY 25

CLEMSON/ OCONEE COUNTY RGNL (CEU)

WAAS CH <b>50405</b> <b>W25A</b>	APP CRS <b>253°</b>	Rwy Idg <b>4400</b> TDZE <b>892</b> Apt Elev <b>892</b>
--	------------------------	--

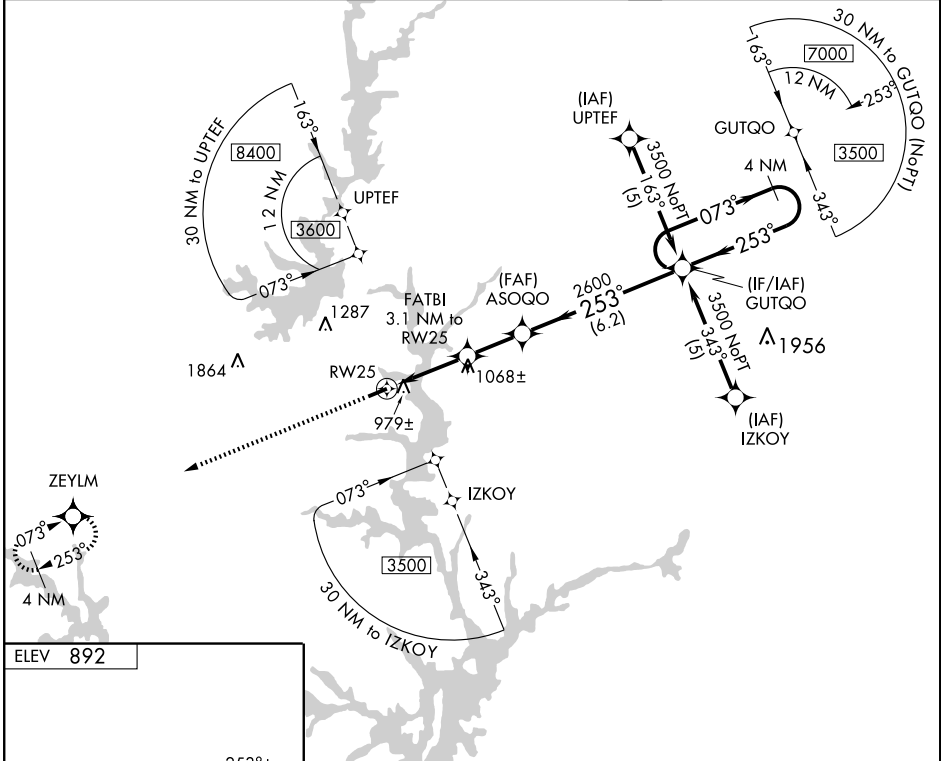
**▼** DME/DME RNP-0.3 NA. Visibility reduction by helicopters NA  
**▲** If local altimeter setting not received, use Anderson altimeter setting and increase DA to 1190 and all MDAs 60 feet.

MISSED APPROACH: Climb to 3000 direct ZEYLM and hold.

ASOS  
**119.275**

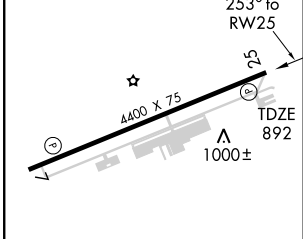
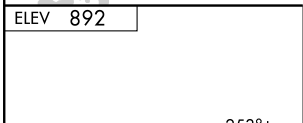
GREER APP CON\*  
**118.8 385.4**

UNICOM  
**122.7 (CTAF) 0**



SE-2, 22 OCT 2009 to 19 NOV 2009

SE-2, 22 OCT 2009 to 19 NOV 2009



	3000	ZEYLM					
		*LNAV Only.		ASOQO		GUTQO	4 NM Holding Pattern
		RW25	FATBI 3.1 NM to RW25				
			1900*	2600			
							GS 3.00° TCH 35

CATEGORY	A	B	C	D
LPV DA	1142-1	250 (300-1)		NA
LNAV MDA	1240-1	348 (400-1)		NA
CIRCLING	1380-1	488 (500-1)	1380-1½ 488 (500-1½)	NA

CLEMSON, SOUTH CAROLINA  
Amdt 1A 08045

34° 40'N - 82° 53'W

# RNAV (GPS) RWY 25