

RNAV (GPS) RWY 7

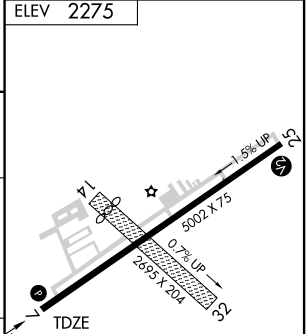
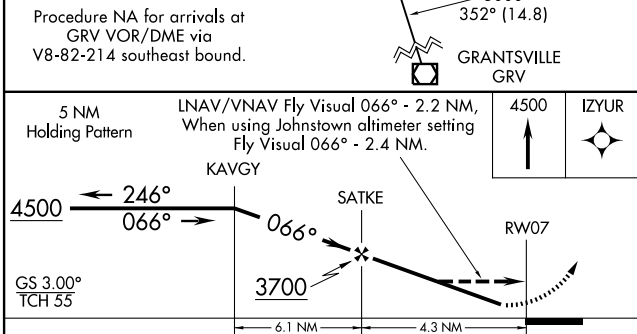
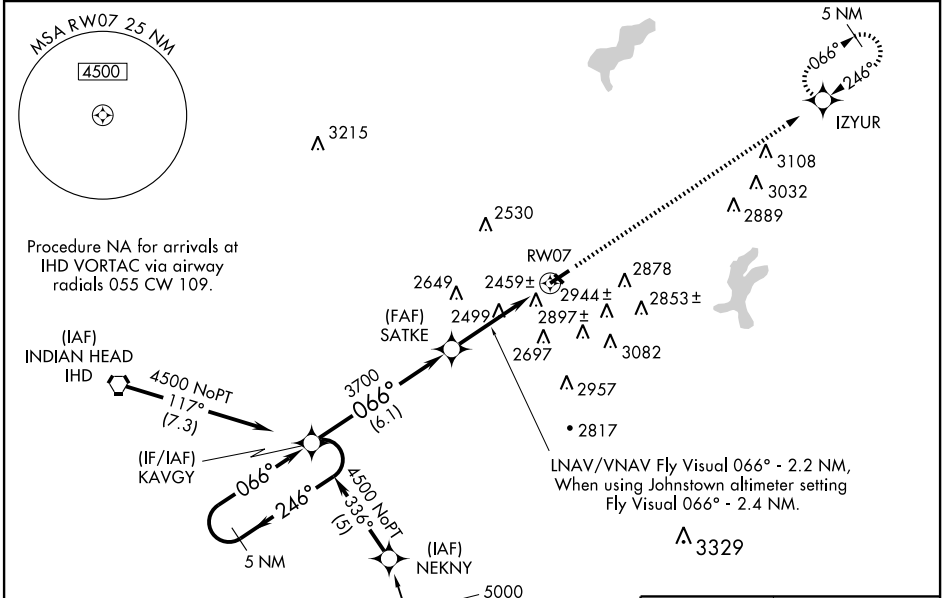
SOMERSET COUNTY (2G9)

WAAS CH 66005 W07A	APP CRS 066°	Rwy Idg TDZE 2275 Apt Elev 2275	5002
--	------------------------	---	-------------

When local altimeter setting not received, use Johnstown altimeter setting and increase all DAs/MDAs 60 feet, LNAV/VNAV Cat C and D visibility ½ mile, LNAV Cat C and D visibility ¼ mile, and Circling Cat C visibility ¼ mile. Baro-VNAV NA when using Johnstown altimeter setting. For uncompensated Baro-VNAV systems, LNAV/VNAV NA below -19°C (-2°F) or above 44°C (111°F). DME/DME RNP-0.3 NA. Visibility reduction by helicopters NA.

MISSED APPROACH:
Climb to 4500 direct IZYUR and hold.

AWOS-3 133.8	CLEVELAND CENTER 124.4 327.1	UNICOM 122.8 (CTAF) 0
------------------------	--	---------------------------------



CATEGORY	A	B	C	D
LPV DA	2525-1 250 (300-1)			
LNNAV/VNAV DA	3029-2 754 (800-2)	3029-2 ¼ 754 (800-2 ¼)	3029-2 ½ 754 (800-2 ½)	
LNNAV MDA	2900-1 625 (700-1)	2900-1 ¾ 625 (700-1 ¾)	2900-2 625 (700-2)	
CIRCLING	2900-1 625 (700-1)	2940-1 ¾ 665 (700-1 ¾)	3300-3 1025 (1100-3)	

NE-4, 22 OCT 2009 to 19 NOV 2009

NE-4, 22 OCT 2009 to 19 NOV 2009