

ROCHELLE, ILLINOIS

AL-5990 (FAA)

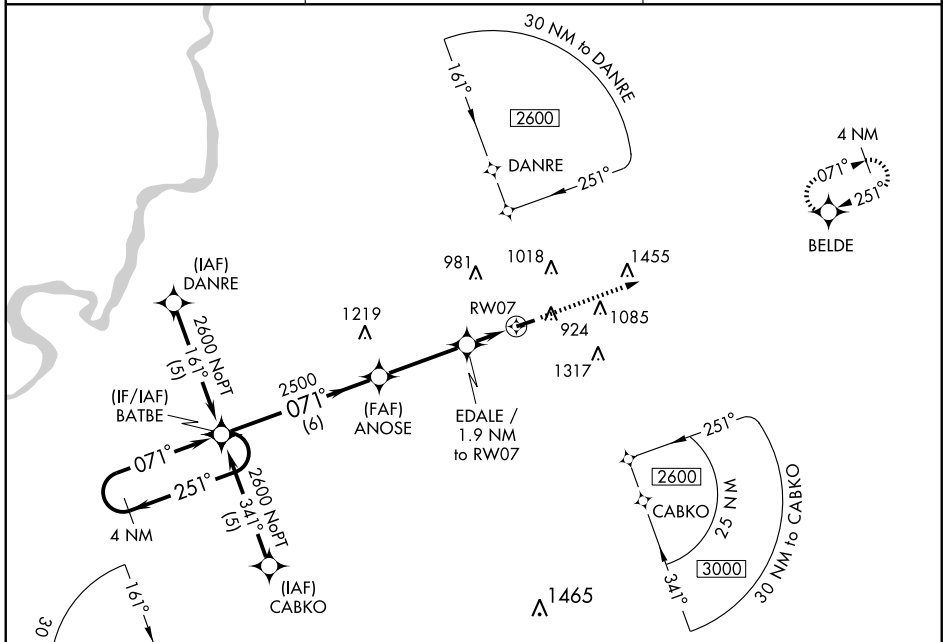
# RNAV (GPS) RWY 7

ROCHELLE MUNI AIRPORT-KORITZ FIELD (RPJ)

APP CRS <b>071°</b>	Rwy Idg <b>4226</b>
	TDZE <b>776</b>
	Apt Elev <b>781</b>

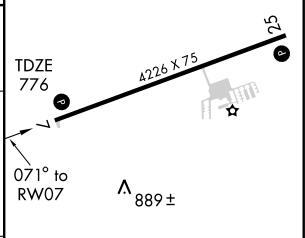
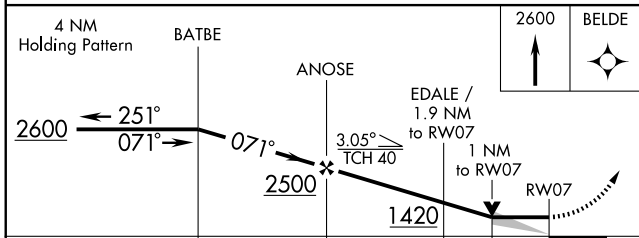
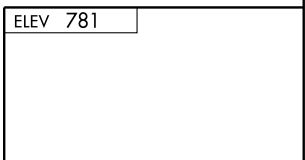
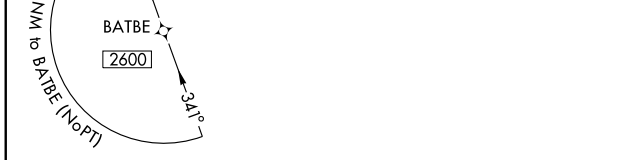
<p><b>▽</b> GPS or RNP-0.3 Required. <b>△NA</b> DME/DME RNP-0.3 NA</p>	<p>MISSED APPROACH: Climb to 2600 direct BELDE WP and hold.</p>
----------------------------------------------------------------------------	---------------------------------------------------------------------

<p>AWOS-3 <b>119.675</b></p>	<p>ROCKFORD APP CON <b>126.0 327.0</b></p>	<p>UNICOM <b>122.8 (CTAF)</b></p>
----------------------------------	------------------------------------------------	---------------------------------------



EC-3, 22 OCT 2009 to 19 NOV 2009

EC-3, 22 OCT 2009 to 19 NOV 2009



CATEGORY	A	B	C	D
LNVA MDA	1140-1 364 (400-1)			1140-1¼ 364 (400-1¼)
CIRCLING	1280-1 499 (500-1)		1340-1½ 559 (600-1½)	1400-2 619 (700-2)



ROCHELLE, ILLINOIS  
Orig 06327

ROCHELLE MUNI AIRPORT-KORITZ FIELD (RPJ)  
41° 54'N-89° 05'W

# RNAV (GPS) RWY 7

REIL Rwy 7 and 25  
MIRL Rwy 7-25