

PORTLAND, TENNESSEE

AL-5989 (FAA)

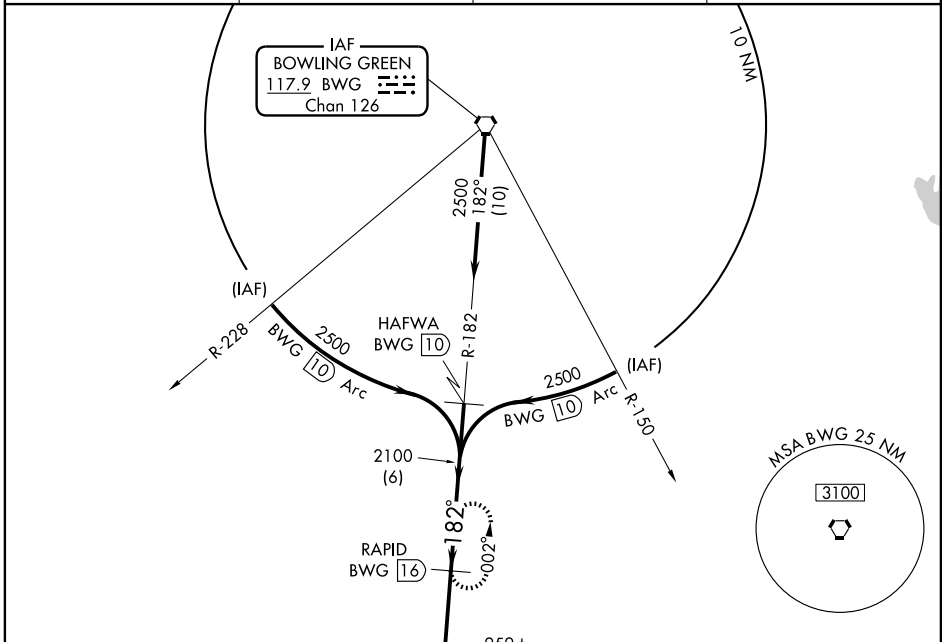
# VOR/DME RWY 19

PORTLAND MUNI (1M5)

VORTAC BWG <b>117.9</b> Chan <b>126</b>	APP CRS <b>182°</b>	Rwy ldg TDZE Apt Elev	<b>5000</b> <b>811</b> <b>818</b>
---	------------------------	-----------------------------	---

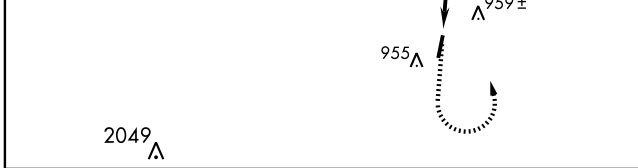
**▽** If local altimeter setting not received, use Bowling Green altimeter setting and increase all MDAs 80 feet.  
**△ NA** MISSED APPROACH: Climb to 1700 then climbing left turn to 2300 via BWG R-182 to RAPID 16 DME and hold.

AWOS-3 <b>118.175</b>	NASHVILLE APP CON <b>119.35 385.55</b>	GCO <b>121.725</b>	UNICOM <b>122.8 (CTAF)</b> <b>①</b>
--------------------------	---	-----------------------	--



SE-1, 22 OCT 2009 to 19 NOV 2009

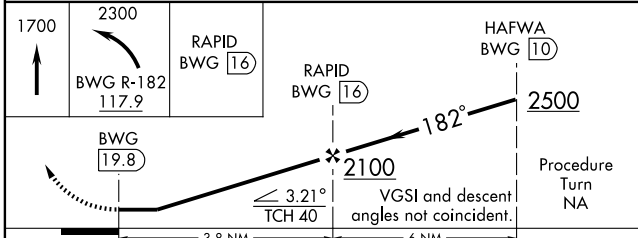
SE-1, 22 OCT 2009 to 19 NOV 2009



ELEV 818	182° 3.8 NM from FAF	61	TDZE 811
----------	----------------------	----	----------

REIL Rwy 1 and 19  
MRL Rwy 1-19 **①**

Knots	60	90	120	150	180
Min:Sec					



CATEGORY	A	B	C	D
S-19	1400-1	589 (600-1)	1400-1½ 589 (600-1½)	1400-1¾ 589 (600-1¾)
CIRCLING	1400-1	582 (600-1)	1400-1½ 582 (600-1½)	1400-2 582 (600-2)

PORTLAND, TENNESSEE  
Amdt 3A 07354

36°36'N-86°29'W

# PORTLAND MUNI (1M5) VOR/DME RWY 19