

VOR or GPS-A
AUGUSTA MUNI (3AU)

VORTAC ICT 113.8 Chan 85	APP CRS 273°	Rwy Idg TDZE Apt Elev N/A N/A 1328
----------------------------------------------	------------------------	------------------------------------------------------------------------

▲ NA Use Wichita altimeter setting.
ACTIVATE VASI Rwy 36-122.8

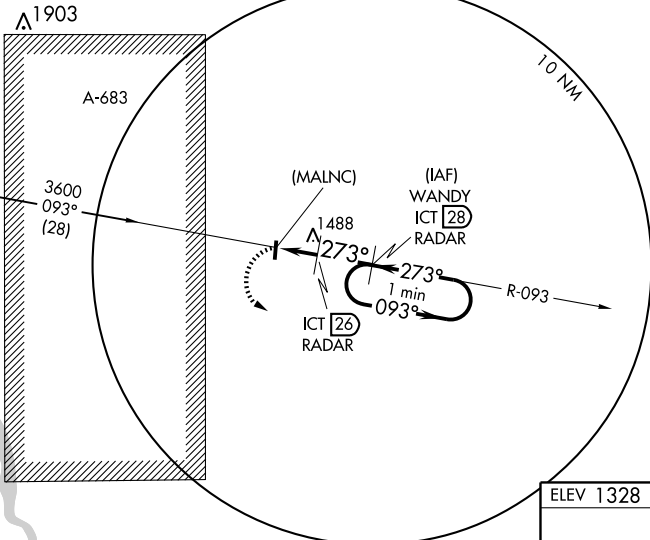
MISSED APPROACH: Climbing left turn to 3000 via ICT R-093 to WANDY 28 DME/RADAR and hold.

WICHITA APP CON
134.8 269.1

CLNC DEL
125.0

UNICOM
122.8 (CTAF) **📻**

WICHITA
113.8 ICT **⋯-⋯**
Chan 85

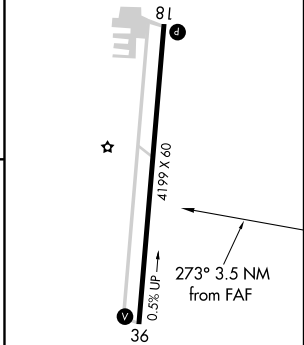
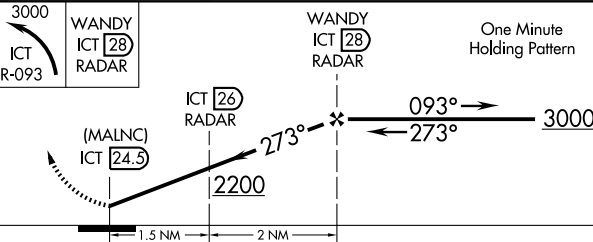


NC-2, 22 OCT 2009 to 19 NOV 2009

NC-2, 22 OCT 2009 to 19 NOV 2009

ELEV 1328

DME or RADAR REQUIRED



REIL Rwy 18 and 36 **📻**
MIRL Rwy 18-36 **📻**

CATEGORY	FAF to MAP 3.5 NM			
	A	B	C	D
CIRCLING	1780-1 452 (500-1)	1840-1¼ 512 (600-1¼)	1840-1½ 512 (600-1½)	NA
	Knots 60	90	120	150
	Min:Sec 3:30	2:20	1:45	1:24
			180	1:10