

FOSS LAKE-SIX DEPARTURE (FOSS 6 • VISTA)(PILOT NAV)

OCEANSIDE, CALIFORNIA

SI-5985 [USN]

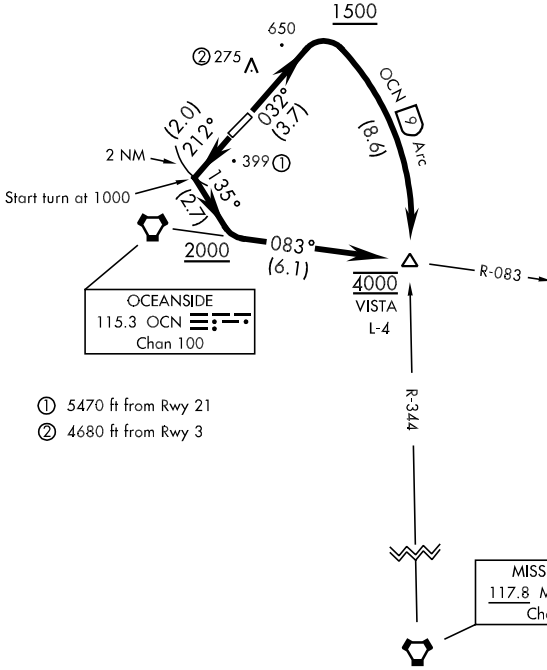
ATIS ★ 267.6  
 CLNC DEL  
 126.2 340.2  
 GND CON  
 128.775 360.2  
 CAMP PENDLETON TOWER ★  
 128.775 382.2  
 SOCAL DEP CON  
 127.3 323.0

MILITARY USE ONLY

Rwy	Knots	60	120	180	240
*3 (C)	V/V(fpm)	320	640	960	1280
†3 (B)	V/V(fpm)	390	780	1170	1560
†3 (C)	V/V(fpm)	290	580	870	1160
*21 (D)	V/V(fpm)	430	860	1290	1720
†21 (E)	V/V(fpm)	470	940	1410	1880
†21 (F)	V/V(fpm)	370	740	1110	1480

\* Minimum climb rate † ATC Climb Rate

- (C) To 900 (800-2 ceiling and vis authorized in lieu of Minimum Climb Rate)
- (B) To 1500
- (C) 1500 to 4000
- (D) To 800 (800-2 ceiling and vis authorized in lieu of Minimum Climb Rate)
- (E) To 1000
- (F) 1000 to 4000



- ① 5470 ft from Rwy 21
- ② 4680 ft from Rwy 3



DEPARTURE ROUTE DESCRIPTION

**TAKE-OFF RWY 3:** Climb to 1500 via track 032°. Join the OCN VORTAC 9 DME arc at or above 1500 and arc E to VISTA int. Cross VISTA at 4000 or assigned altitude.

**TAKE-OFF RWY 21:** Climb to 1000 within 2 NM via track 212° turn left heading 135°, to join the OCN VORTAC R-083 at or above 2000 to VISTA int. Cross VISTA at 4000 or assigned altitude.

SW-3, 22 OCT 2009 to 19 NOV 2009

SW-3, 22 OCT 2009 to 19 NOV 2009