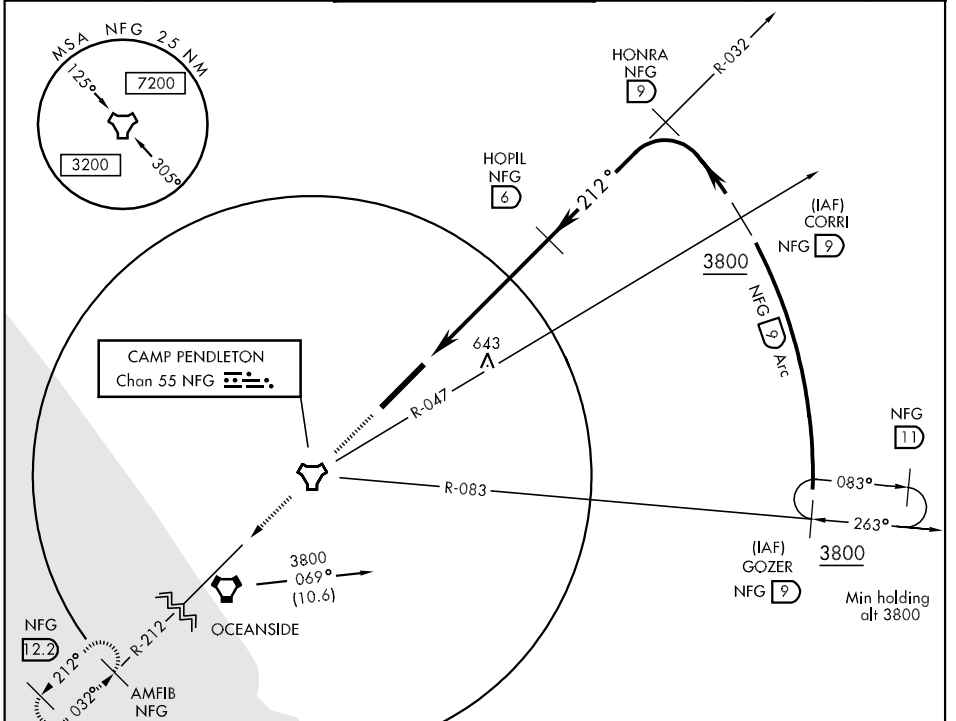


# COPTER TACAN RWY 21

TACAN NFG Chan <b>55</b>	APCH CRS <b>212°</b>	Rwy ldg TDZE Arpt Elev <b>6005</b> <b>78</b> <b>78</b>	AL-5985 [USN] CAMP PENDLETON MCAS (MUNN FIELD) (KNFG)
-----------------------------	-------------------------	---	---

<p>▼ * When ALS inop, increase vis to 1 mile. ** When ALS inop, increase vis to CATS ABCD to 1 mile.</p>	SALSF <b>(A2)</b>	MISSED APPROACH: Climb to 2000 via R-032 and R-212 to AMFIB (NFG R-212/8.2 DME) and hold.
--	----------------------	---

ATIS * <b>267.6</b>	SOCAL APP CON <b>127.3 323.0</b>	CAMP PENDLETON TOWER * <b>128.775 382.2</b>	GND CON <b>128.775 360.2</b>	CLNC DEL <b>126.2 340.2</b>	ASR/PAR
------------------------	-------------------------------------	--	---------------------------------	--------------------------------	---------



EMERG SAFE ALT 100 NM 13,600	2000 R-032		AMFIB	VDA and VGSI not coincident.		HONRA R-032 9	CORRI R-047 9	GOZER R-083 9	
CATEGORY	COPTER								
H-21*	900-¾	822	(900-¾)						
CIRCLING	NOT AUTHORIZED								
S-PAR 21**	438-¾	360	(400-¾)	GS 3.5°					

# COPTER TACAN RWY 21

SW-3, 22 OCT 2009 to 19 NOV 2009

SW-3, 22 OCT 2009 to 19 NOV 2009