

LYONS, KANSAS

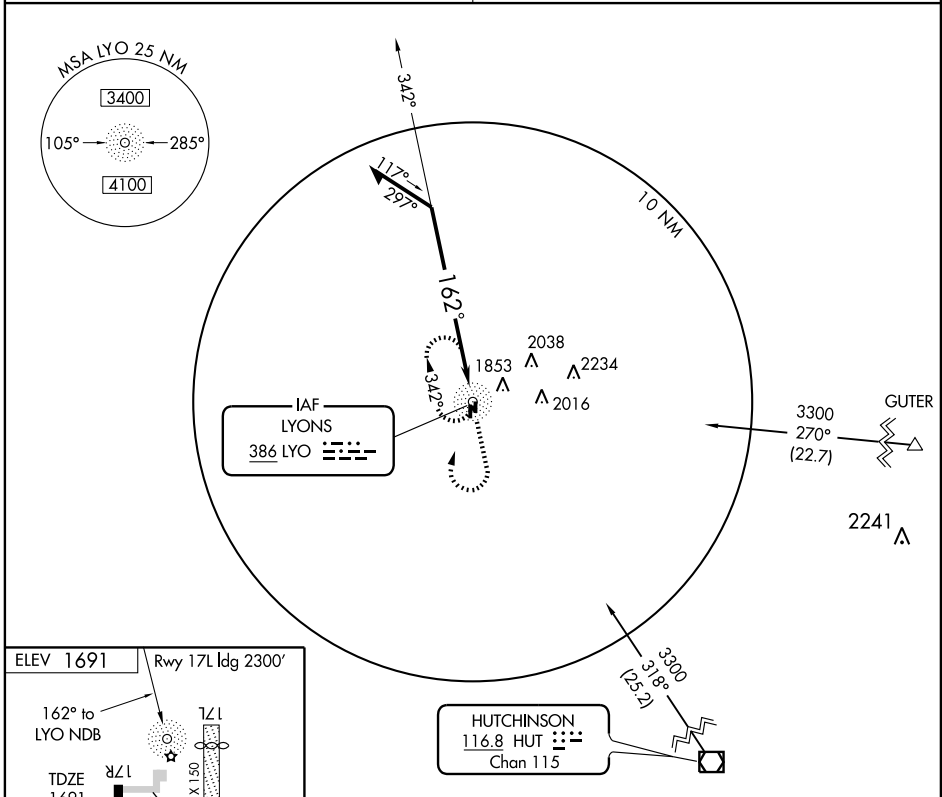
AL-5982 (FAA)

NDB RWY 17R

LYONS-RICE COUNTY MUNI (LYO)

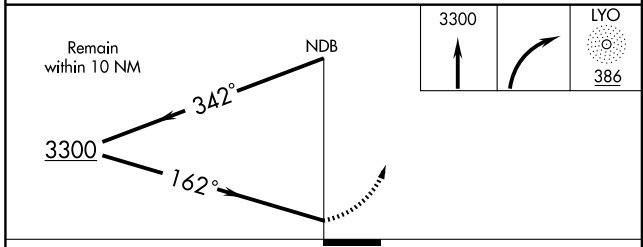
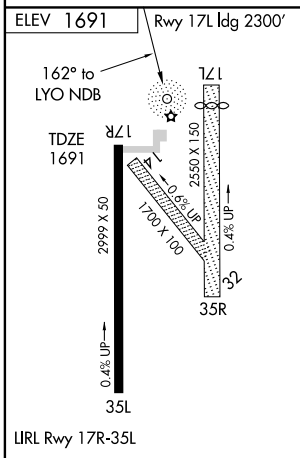
NDB LYO 386	APP CRS 162°	Rwy Idg 2999
		TDZE 1691
		Apt Elev 1691

Use Hutchinson altimeter setting. ▲ NA	MISSED APPROACH: Climb to 3300 then right turn direct LYO NDB and hold.
KANSAS CITY CENTER 118.8 337.4	UNICOM 122.8 (CTAF)



NC-2, 22 OCT 2009 to 19 NOV 2009

NC-2, 22 OCT 2009 to 19 NOV 2009



CATEGORY	A	B	C	D
S-17R	2320-1	629 (700-1)	NA	
CIRCLING	2320-1	629 (700-1)	NA	

Knots	60	90	120	150	180
Min:Sec					

LYONS, KANSAS
Amdt 6 08101

38° 21' N-98° 14' W

LYONS-RICE COUNTY MUNI (LYO)
NDB RWY 17R