

LYONS, KANSAS

AL-5982 (FAA)

GPS RWY 17R

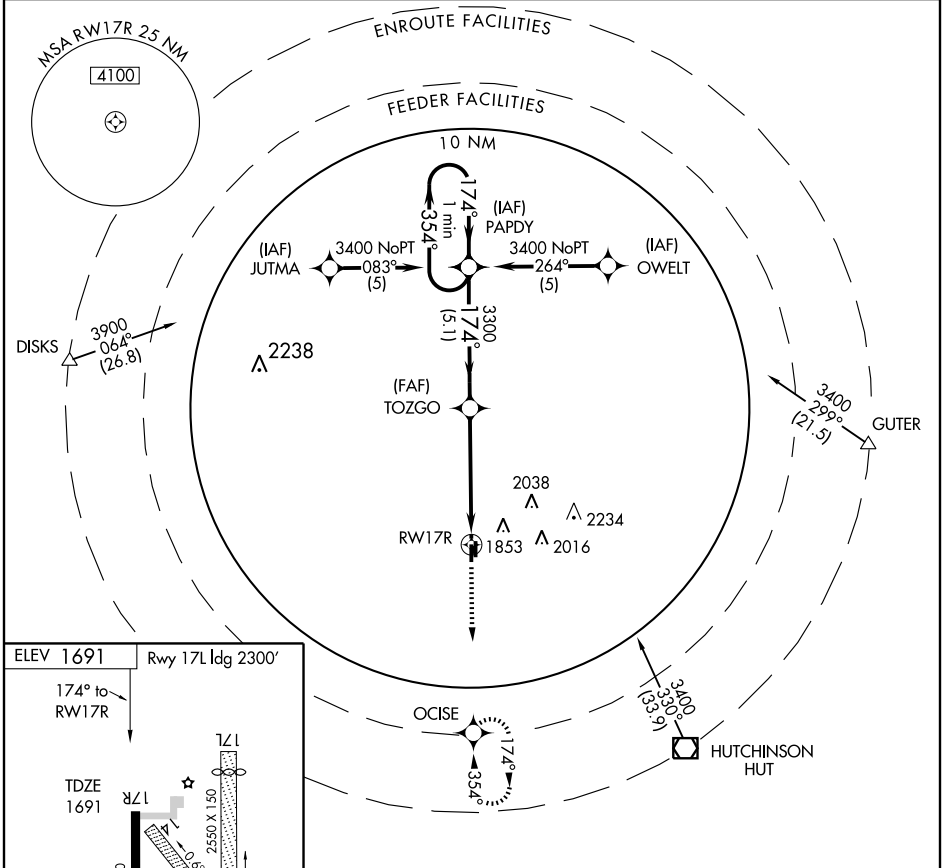
LYONS-RICE COUNTY MUNI (LYO)

APP CRS 174°	Rwy ldg TDZE Apt Elev	2999 1691 1691
------------------------	-----------------------------	---

Use Hutchinson altimeter setting. MISSED APPROACH: Climb to 3400 direct OCISE WP and hold.

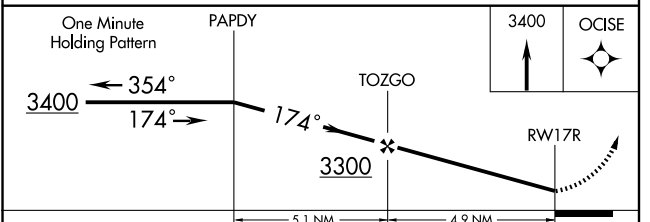
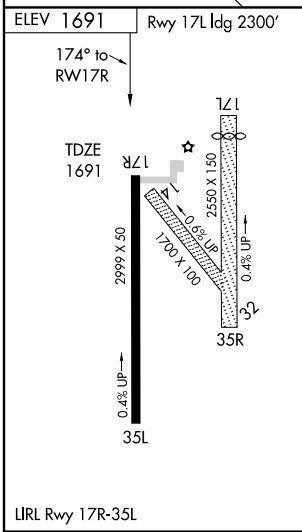
▲ NA

KANSAS CITY CENTER **118.8 337.4** UNICOM **122.8** (CTAF)



NC-2, 22 OCT 2009 to 19 NOV 2009

NC-2, 22 OCT 2009 to 19 NOV 2009



CATEGORY	A	B	C	D
S-17R	2180-1	489 (500-1)		NA
CIRCLING	2280-1	589 (600-1)		NA

LYONS, KANSAS
Orig 08101

38°21'N-98°14'W

LYONS-RICE COUNTY MUNI (LYO)
GPS RWY 17R