

GALLIPOLIS, OHIO

AL-5981 (FAA)

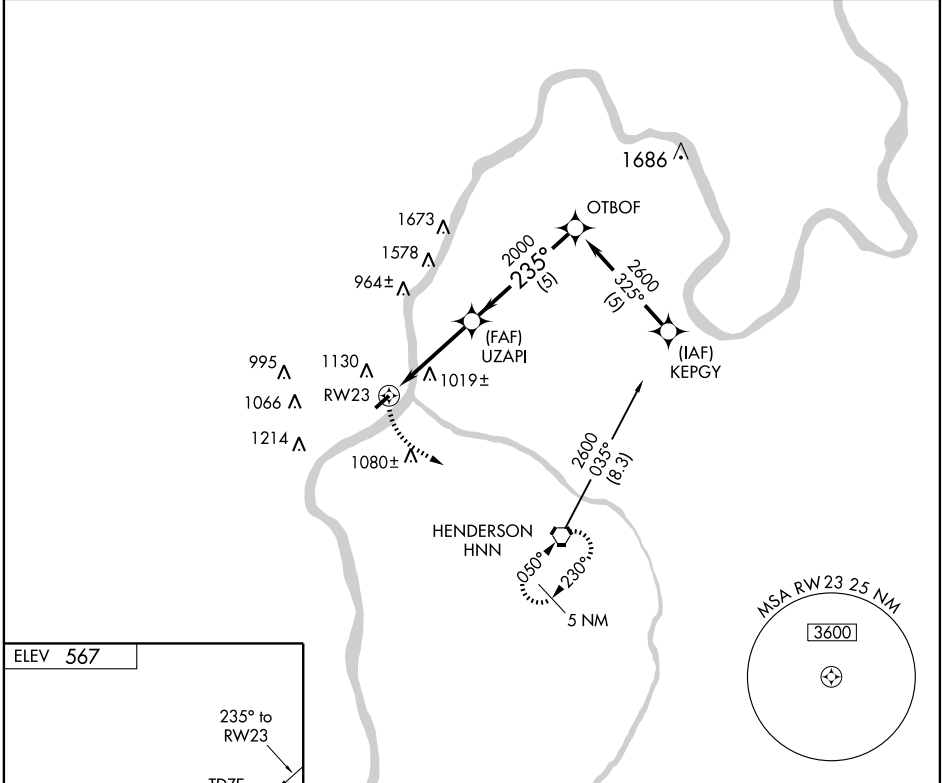
GPS RWY 23

GALLIPOLIS / GALLIA-MEIGS RGNL (G.A.S)

APP CRS 235°	Rwy ldg TDZE Apt Elev	3998 567 567
------------------------	-----------------------------	---

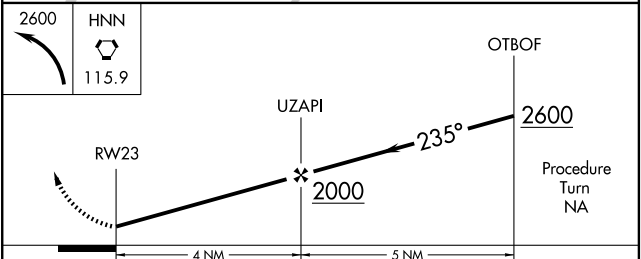
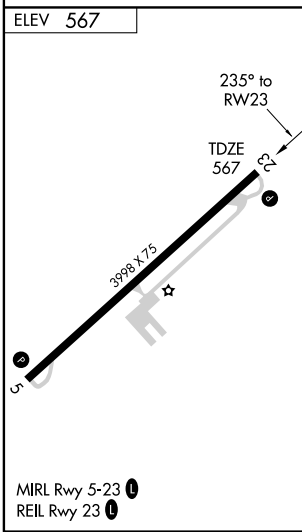
MISSED APPROACH: Climbing left turn to 2600 direct HNN VORTAC and hold.

AWOS-3 119.925	POINT PLEASANT AWOS-3 119.675	HUNTINGTON APP CON 128.4 270.1	CLNC DEL 124.55	UNICOM 123.0 (CTAF)
--------------------------	---	--	---------------------------	-------------------------------



EC-2, 22 OCT 2009 to 19 NOV 2009

EC-2, 22 OCT 2009 to 19 NOV 2009



CATEGORY	A	B	C	D
S-23	1420-1 853 (900-1)	1420-1¼ 853 (900-1¼)	1420-2½ 853 (900-2½)	1420-2¾ 853 (900-2¾)
CIRCLING	1480-1¼	913 (1000-1¼)	1480-2¾ 913 (1000-2¾)	1480-3 913 (1000-3)

GALLIPOLIS, OHIO
Orig 09239

38°50'N - 82°10'W

GALLIPOLIS / GALLIA-MEIGS RGNL (G.A.S)

GPS RWY 23