

RNAV (GPS) RWY 6

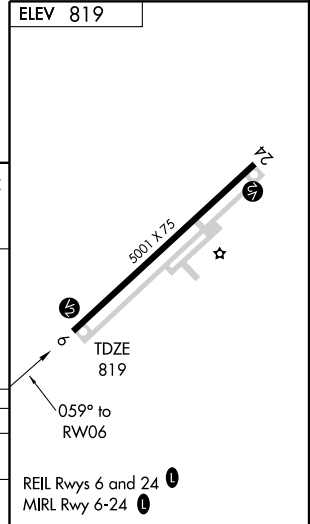
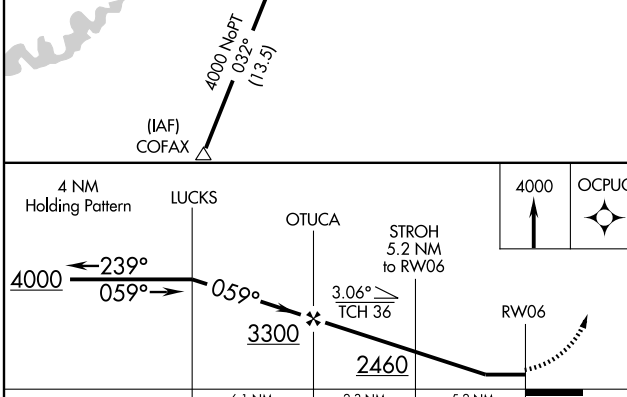
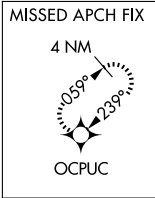
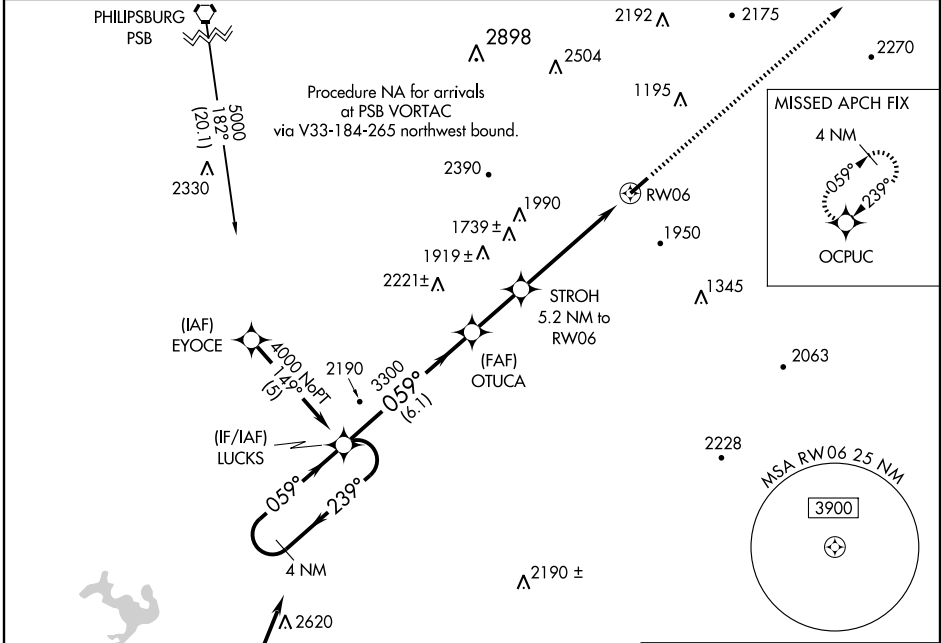
REEDSVILLE/MIFFLIN COUNTY (RVL)

APP CRS	Rwy Idg	5001
059°	TDZE	819
	Apt Elev	819

NA Circling NA northwest of Rwy 6-24. When local altimeter setting not received, use State College altimeter setting and increase all MDAs 100 feet. Visibility reduction by helicopters NA. DME/DME RNP-0.3 NA.

MISSED APPROACH: Climb to 4000 direct OCPUC and hold.

AWOS-3 123.85	NEW YORK CENTER 134.8 338.3	UNICOM 122.7 (CTAF)
-------------------------	---------------------------------------	-------------------------------



CATEGORY	A	B	C	D
LNVA MDA	1800-1¼ 981 (1000-1¼)	1800-1½ 981 (1000-1½)	1800-3 981 (1000-3)	
CIRCLING	1800-1¼ 981 (1000-1¼)	1800-1½ 981 (1000-1½)	1800-3 981 (1000-3)	2360-3 1541 (1600-3)

NE-4, 22 OCT 2009 to 19 NOV 2009

NE-4, 22 OCT 2009 to 19 NOV 2009