

KENEDY, TEXAS

AL-5975 (FAA)

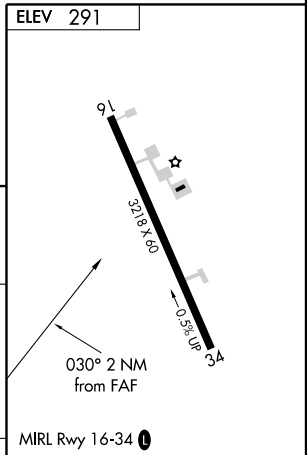
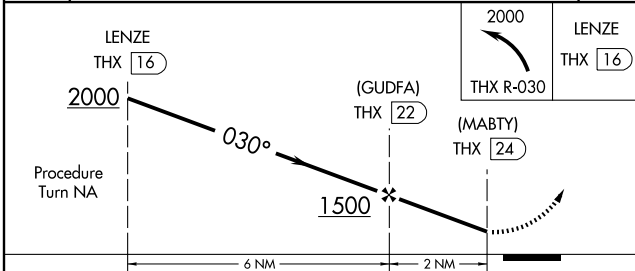
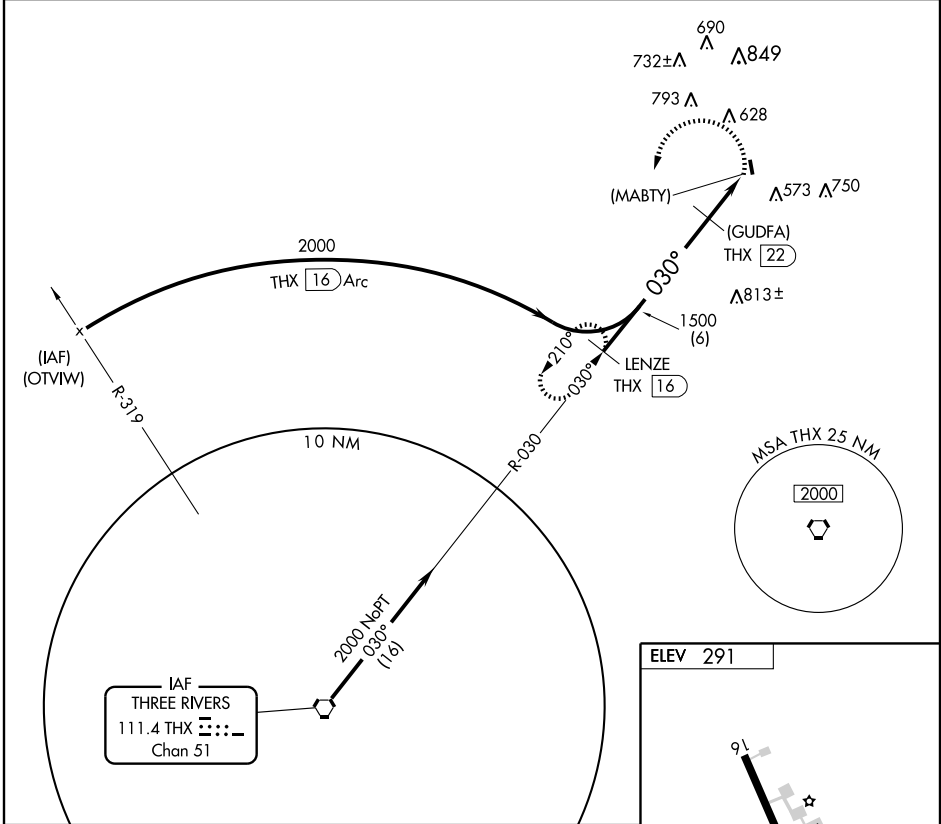
VORTAC THX 111.4 Chan 51	APP CRS 030°	Rwy Idg TDZE Apt Elev N/A N/A 291
--	------------------------	---

VOR/DME or GPS-A

KENEDY/ KARNES COUNTY (2R.9)

<p>▼ Use Victoria Rgnl altimeter setting.</p> <p>▲ NA</p>	<p>MISSED APPROACH: Climbing left turn to 2000 via THX R-030 to LENZE/16 DME and hold.</p>
---	--

<p>HOUSTON CENTER 134.6 322.5</p>	<p>UNICOM 123.0 (CTAF) 0</p>
--	---



CATEGORY	A	B	C	D
CIRCLING	1100-1 809 (900-1)	1100-1¼ 809 (900-1¼)	NA	

Knots	60	90	120	150	180
Min:Sec					

KENEDY, TEXAS
Amdt 6 08101

28°49'N-97°52'W

VOR/DME or GPS-A

SC-3, 22 OCT 2009 to 19 NOV 2009

SC-3, 22 OCT 2009 to 19 NOV 2009