

ELY, MINNESOTA

AL-5974 (FAA)

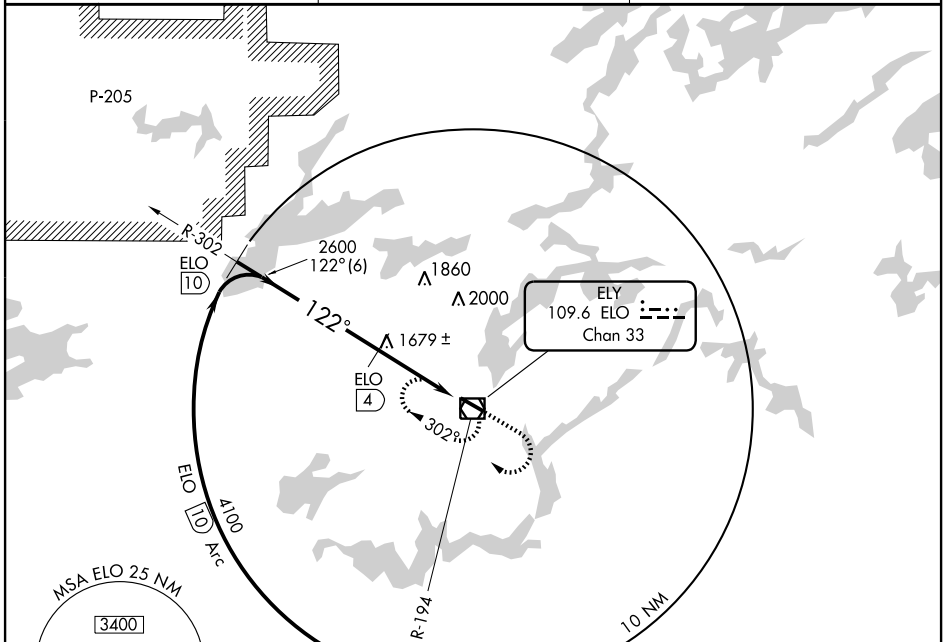
VOR/DME ELO <b>109.6</b> Chan <b>33</b>	APP CRS <b>122°</b>	Rwy Idg TDZE Apt Elev <b>5600</b> <b>1451</b> <b>1455</b>
---	------------------------	--

# VOR/DME RWY 12

ELY MUNI (ELO)

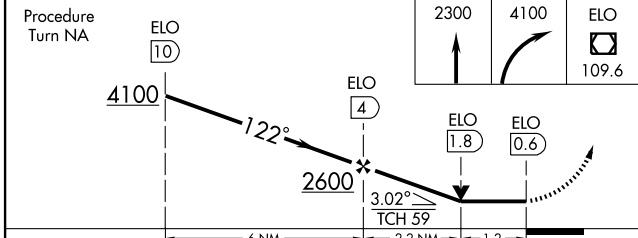
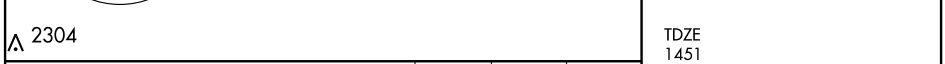
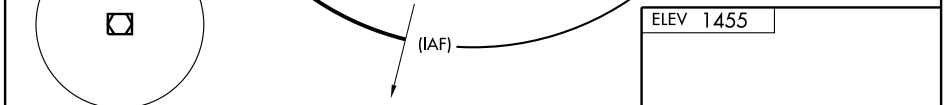
**▽** MISSED APPROACH: Climb to 2300 then climbing right turn to 4100 direct ELO VOR/DME and hold.

AWOS-3 <b>132.025</b>	PRINCETON RADIO <b>122.1R</b>	UNICOM <b>122.8</b> (CTAF) <b>📻</b>
--------------------------	----------------------------------	--

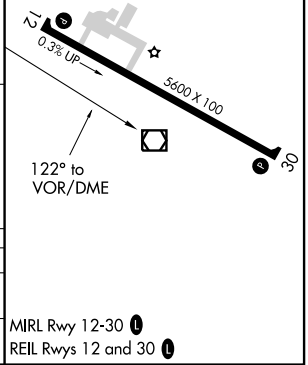


NC-1, 22 OCT 2009 to 19 NOV 2009

NC-1, 22 OCT 2009 to 19 NOV 2009



CATEGORY	A	B	C	D
S-12	1900-1	449 (500-1)	1900-1½ 449 (500-1½)	1900-1½ 449 (500-1½)
CIRCLING	1920-1	465 (500-1)	1940-1½ 485 (500-1½)	2020-2 565 (600-2)



ELY, MINNESOTA  
Amdt 5 09015

47°49'N-91°50'W

# ELY MUNI (ELO)

## VOR/DME RWY 12