

WISE, VIRGINIA

AL-5973 (FAA)

RNAV (GPS) RWY 24

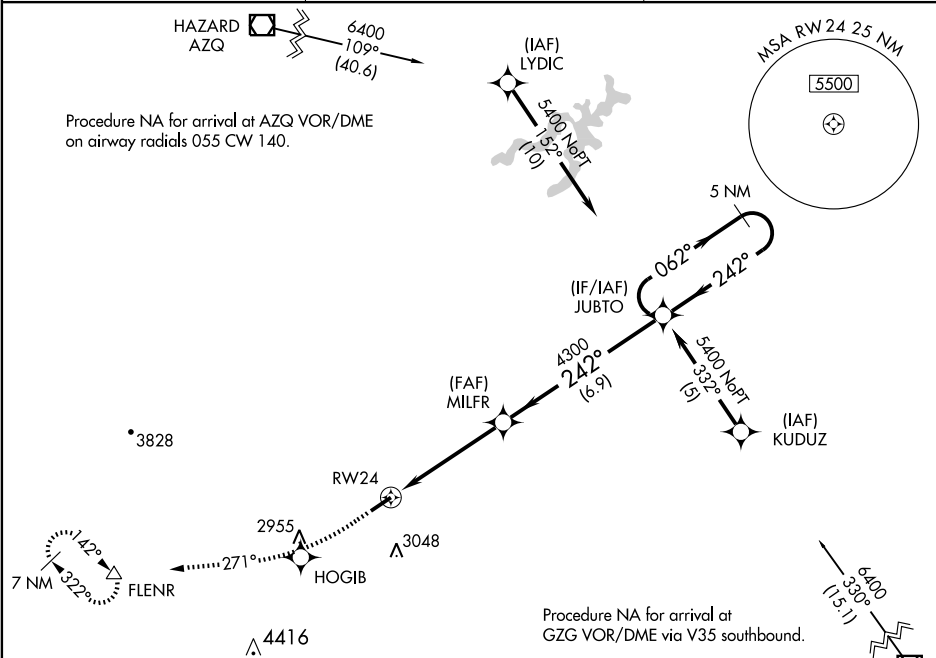
WISE / LONESOME PINE (LNP)

WAAS CH 77602 W24A	APP CRS 242°	Rwy ldg TDZE Apt Elev	5280 2684 2684
--	------------------------	-----------------------------	---

⚠ Inoperative table does not apply. For uncompensated Baro-VNAV systems, LNAV/VNAV NA below -20°C (-4°F) or above 43°C (110°F).
⚠ DME/DME RNP-0.3 NA. Visibility reduction by helicopters NA.

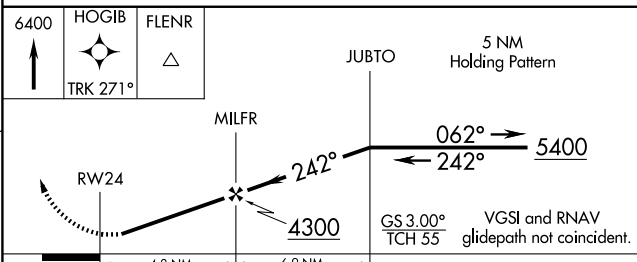
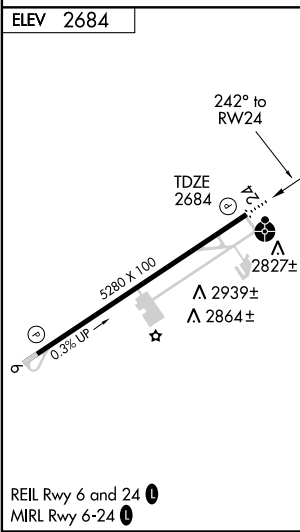
ODALS MISSED APPROACH: Climb to 6400 direct HOGIB and via 271° track to FLENR and hold, continue climb-in-hold to 6400.

AWOS-3 118.6	INDIANAPOLIS CENTER 126.57 253.5	UNICOM 123.0 (CTAF) 0
------------------------	--	--



NE-3, 22 OCT 2009 to 19 NOV 2009

NE-3, 22 OCT 2009 to 19 NOV 2009



CATEGORY	A	B	C	D
LPV DA	3021 - 1 1/4		337 (400-1 1/4)	
LNAV/VNAV DA	3126 - 1 1/2		442 (500-1 1/2)	
LNAV MDA	3400 - 1	716 (800-1)	3400 - 2	3400 - 2 1/4 716 (800-2 1/4)
CIRCLING	3440 - 1 1/2	756 (800-1 1/2)	3460 - 2 1/4 776 (800-2 1/4)	3560 - 2 3/4 876 (900-2 3/4)

WISE, VIRGINIA
Orig 08157

36°59'N - 82°32'W

RNAV (GPS) RWY 24

WISE / LONESOME PINE (LNP)