

POMPANO BEACH, FLORIDA

AL-5972 (FAA)

# RNAV (GPS) RWY 6

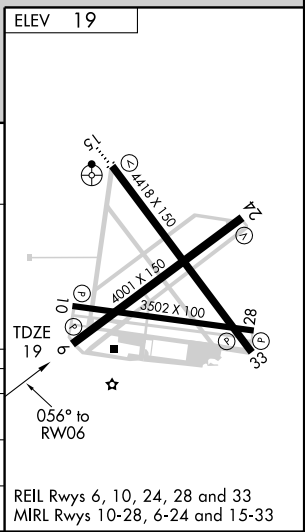
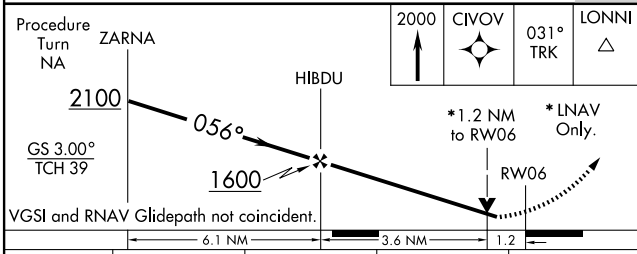
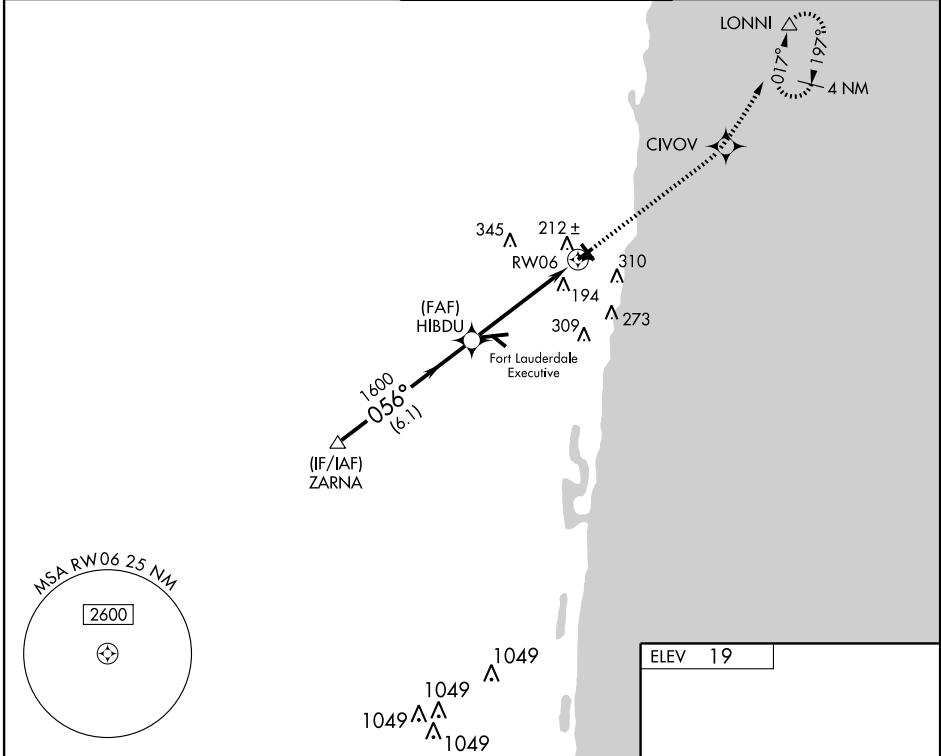
POMPANO BEACH AIRPARK (PMP)

WAAS CH <b>56603</b> <b>W06A</b>	APP CRS <b>056°</b>	Rwy Idg TDZE Apt Elev	<b>4001</b> <b>19</b> <b>19</b>
----------------------------------------	------------------------	-----------------------------	---------------------------------------

**▽** DME/DME RNP-0.3 NA.  
Visibility reduction by helicopters NA.  
**▲** If local altimeter setting not received, use Fort Lauderdale  
**W** Executive altimeter setting.

MISSED APPROACH: Climb to 2000 direct CIVOV and via 031° track to LONNI and hold.

ATIS <b>120.55</b>	MIAMI APP CON <b>119.7 306.3</b>	POMPANO BEACH TOWER * <b>125.4 (CTAF)</b>	GND CON <b>121.9</b>	UNICOM <b>122.95</b>
-----------------------	-------------------------------------	----------------------------------------------	-------------------------	-------------------------



CATEGORY	A	B	C	D
LPV DA	348-1¼	329 (400-1¼)		NA
LNAV MDA	480-1	461 (500-1)		NA
CIRCLING	660-1	641 (700-1)		NA

POMPANO BEACH, FLORIDA  
Orig-A 09183

26°15'N-80°07'W

POMPANO BEACH AIRPARK (PMP)  
**RNAV (GPS) RWY 6**

SE-3, 22 OCT 2009 to 19 NOV 2009

SE-3, 22 OCT 2009 to 19 NOV 2009