

POMPANO BEACH, FLORIDA

AL-5972 (FAA)

# LOC RWY 15

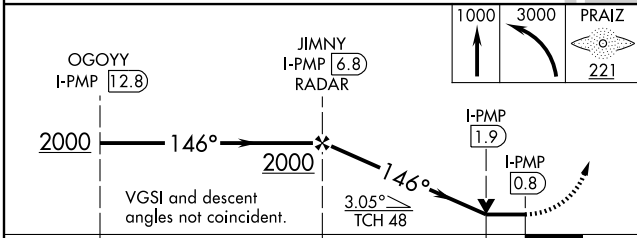
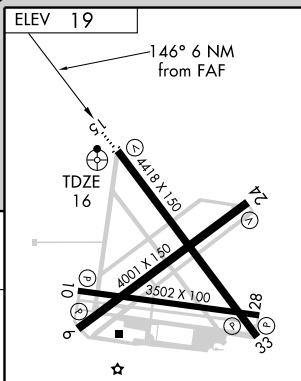
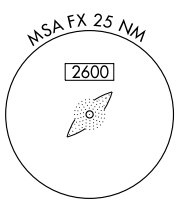
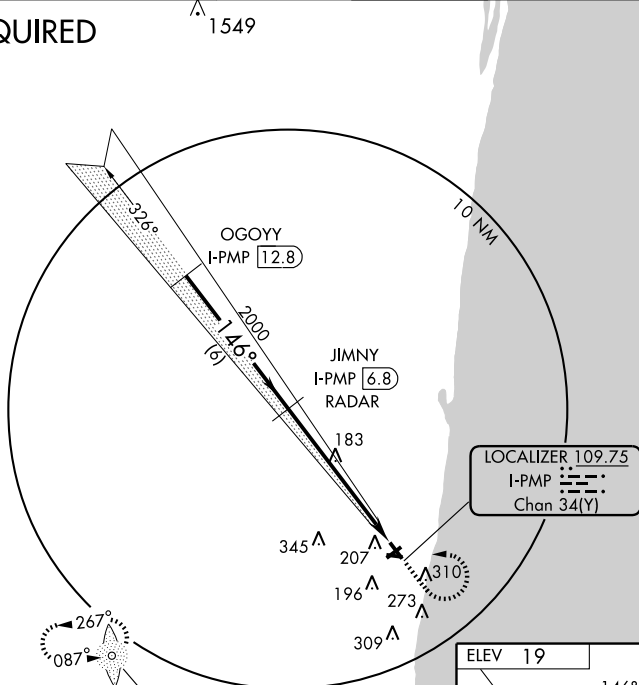
POMPANO BEACH AIRPARK (PMP)

LOC/DME I-PMP <b>109.75</b> Chan <b>34(Y)</b>	APP CRS <b>146°</b>	Rwy Idg <b>4418</b> TDZE <b>16</b> Apt Elev <b>19</b>
---	------------------------	---

<p>ADF and DME or RADAR Required. If local altimeter setting not received, use Fort Lauderdale Executive altimeter setting.</p>	<p>ODALS  </p>	<p>MISSED APPROACH: Climb to 1000 then climbing left turn to 3000 direct PRAIZ LOM and hold.</p>
---	--------------------	--

<p>ATIS <b>120.55</b></p>	<p>MIAMI APP CON <b>119.7 306.3</b></p>	<p>POMPANO BEACH TOWER ★ <b>125.4 (CTAF)</b></p>	<p>GND CON <b>121.9</b></p>	<p>UNICOM <b>122.95</b></p>
-------------------------------	---	--	---------------------------------	---------------------------------

## RADAR REQUIRED



REIL Rwy 6, 10, 24, 28 and 33  
MIRL Rwy 10-28, 6-24 and 15-33

FAF to MAP 6 NM					
Knots	60	90	120	150	180
Min:Sec	6:00	4:00	3:00	2:24	2:00

CATEGORY	A	B	C	D	FAF to MAP 6 NM					
S-15	440-1	424 (500-1)		NA	Knots	60	90	120	150	180
CIRCLING	660-1	641 (700-1)		NA	Min:Sec	6:00	4:00	3:00	2:24	2:00

POMPANO BEACH, FLORIDA  
Amdt 3 09183

26°15'N-80°07'W

POMPANO BEACH AIRPARK (PMP)  
**LOC RWY 15**

SE-3, 22 OCT 2009 to 19 NOV 2009

SE-3, 22 OCT 2009 to 19 NOV 2009