

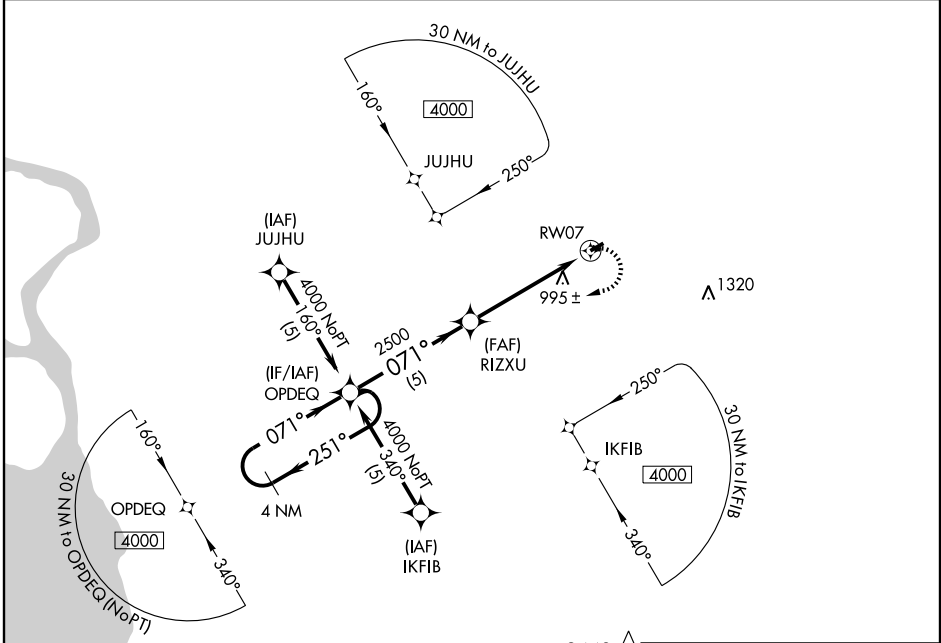
RNAV (GPS) RWY 7

AKRON (9G3)

APP CRS 071°	Rwy Idg 3268
	TDZE 838
	Apt Elev 840

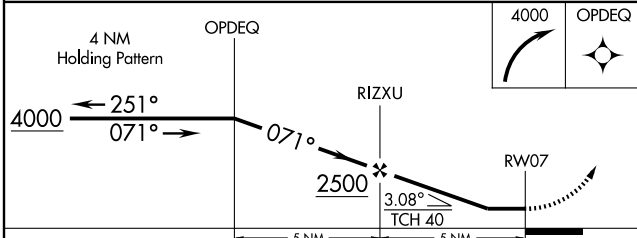
<p>▽ GPS or RNP-0.3 required. △ NA DME/DME RNP-0.3 NA. Use Buffalo altimeter setting.</p>	<p>MISSED APPROACH: Climbing right turn to 4000 direct OPDEQ WP and hold.</p>
---	---

<p>BUFFALO APP CON 126.15 263.125</p>	<p>UNICOM 122.725 (CTAF) 0</p>
--	---



NE-2, 22 OCT 2009 to 19 NOV 2009

NE-2, 22 OCT 2009 to 19 NOV 2009



CATEGORY	A	B	C	D
LNVA MDA	1260-1	422 (500-1)	1260-1¼ 422 (500-1¼)	NA
CIRCLING	1340-1	500 (500-1)	1340-1½ 500 (500-1½)	NA

