

# RNAV (GPS) RWY 31

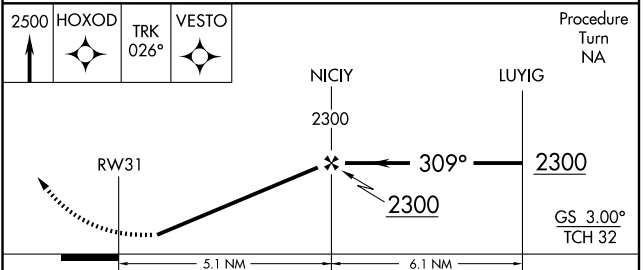
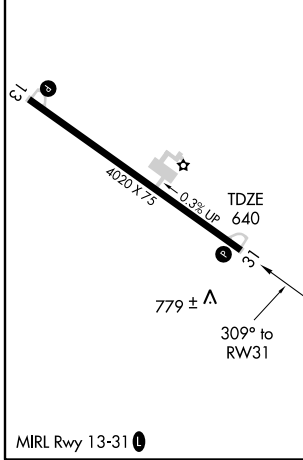
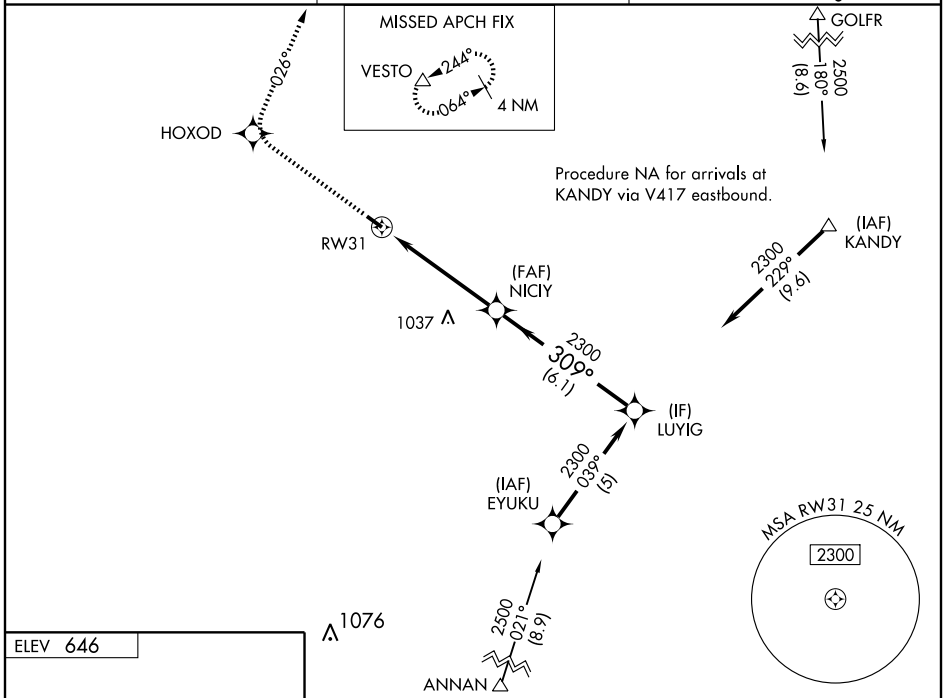
WASHINGTON-WILKES COUNTY (IIY)

WAAS <b>CH 45609</b> <b>W31A</b>	APP CRS <b>309°</b>	Rwy Idg <b>4020</b>
		TDZE <b>640</b>
		Apt Elev <b>646</b>

**Baro-VNAV NA** when using Athens altimeter setting. For uncompensated Baro-VNAV systems, LNAV/VNAV NA below -16°C (4°F) or above 47°C (116°F). DME/DME RNP-0.3 NA. Visibility reduction by helicopters NA. When local altimeter setting not received, use Athens altimeter setting and increase LPV DA to 1078, LNAV/VNAV DA to 1135, and all MDA 100 feet; increase LPV all Cats., LNAV/VNAV all Cats., LNAV Cat. C, and Circling Cat. C visibility to 1/2 mile.

**MISSED APPROACH:** Climb to 2500 direct HOXOD and via 026° track to VESTO and hold.

AWOS-3 <b>118.375</b>	ATLANTA APP CON ★ <b>127.5 316.05</b>	UNICOM <b>122.7 (CTAF) ①</b>
--------------------------	--	---------------------------------



CATEGORY	A	B	C	D
LPV DA	992-1¼ 352 (400-1¼)			NA
LNAV/VNAV DA	1049-1½ 409 (500-1½)			NA
LNAV MDA	1180-1	540 (600-1)	1180-1½ 540 (600-1½)	NA
CIRCLING	1180-1	534 (600-1)	1180-1½ 534 (600-1½)	NA

SE-4, 22 OCT 2009 to 19 NOV 2009

SE-4, 22 OCT 2009 to 19 NOV 2009