

RNAV (GPS) RWY 13

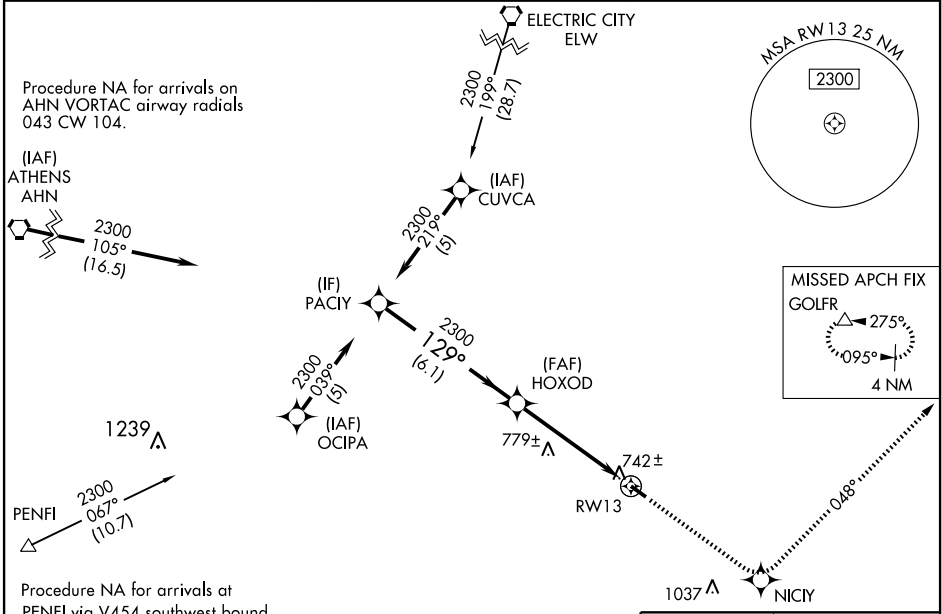
WASHINGTON-WILKES COUNTY (IIV)

WAAS CH 62809 W13A	APP CRS 129°	Rwy Idg TDZE 646 Apt Elev 646	4020
--	------------------------	---	-------------

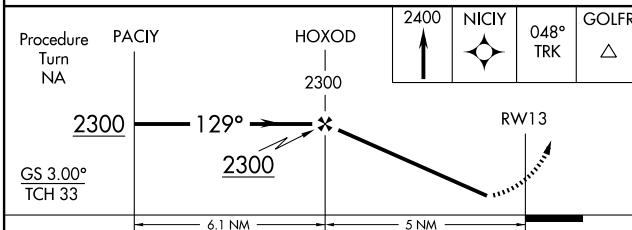
NA When local altimeter setting not received, use Athens altimeter setting and increase LPV DA to 1082, LNAV/VNAV DA to 1098, and all MDA 100 feet; increase LPV all Cats visibility ¼ mile, LNAV/VNAV all Cats visibility ½ mile, and LNAV Cat C visibility ¼ mile. Baro-VNAV NA when using Athens altimeter setting. For uncompensated Baro-VNAV systems, LNAV/VNAV NA below -16°C (4°F) or above 47°C (116°F). DME/DME RNP-0.3 NA. Visibility reduction by helicopters NA.

MISSED APPROACH:
Climb to 2400 direct NICY and via 048° track to GOLFR and hold.

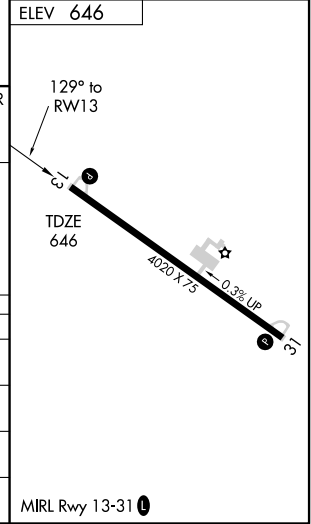
AWOS-3 118.375	ATLANTA APP CON* 127.5 316.05	UNICOM 122.7 (CTAF) 0
--------------------------	---	---------------------------------



Procedure Turn NA	PACIY	HOXOD	2400	NICY	048° TRK	GOLFR
-------------------	-------	-------	------	------	----------	-------



CATEGORY	A	B	C	D
LPV DA	996-1¼	350 (400-1¼)		NA
LNAV/VNAV DA	1012-1¼	366 (400-1¼)		NA
LNAV MDA	1040-1	394 (400-1)		NA
CIRCLING	1080-1 434 (500-1)	1100-1 454 (500-1)	1100-1½ 454 (500-1½)	NA



SE-4, 22 OCT 2009 to 19 NOV 2009

SE-4, 22 OCT 2009 to 19 NOV 2009