

RNAV (GPS) RWY 18

WASHINGTON/ DAVIESS COUNTY (DCY)

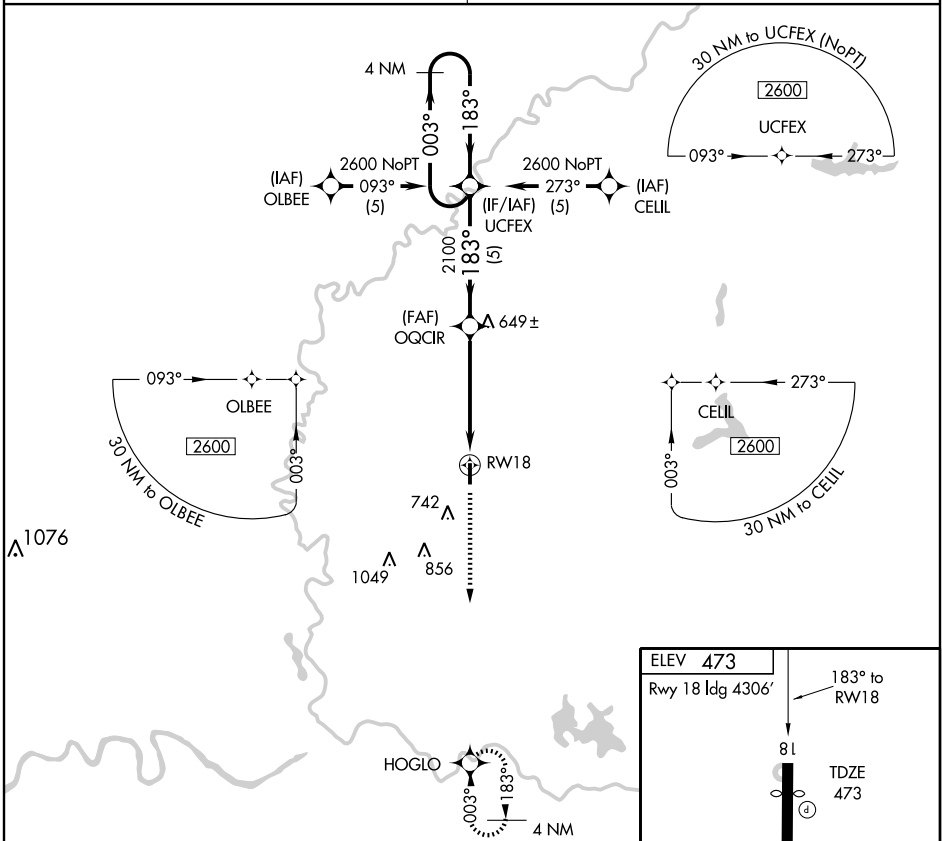
APP CRS	Rwy Idg	4306
183°	TDZE	473
	Apt Elev	473

▼ Use Evansville altimeter setting.
 ▲ NA GPS or RNP-0.3 required.
 DME/DME RNP-0.3 NA.

MISSED APPROACH: Climb to 2100 direct HOGLO WP and hold.

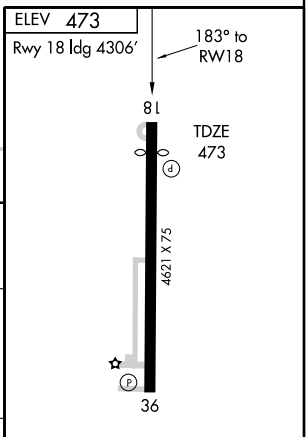
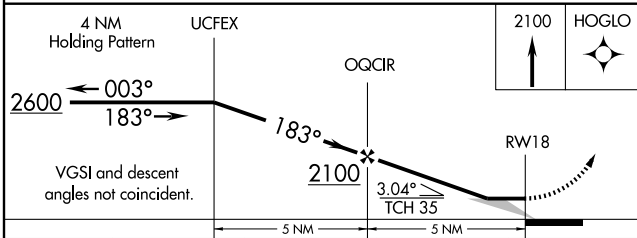
EVANSVILLE APP CON ★
125.6 267.9

UNICOM
122.8 (CTAF)



EC-2, 22 OCT 2009 to 19 NOV 2009

EC-2, 22 OCT 2009 to 19 NOV 2009



CATEGORY	A	B	C	D
LNAV MDA	980-1	507 (600-1)	980-1½	507 (600-1½)
CIRCLING	1160-1 687 (700-1)	1220-1¼ 747 (800-1¼)	1220-2¼ 747 (800-2¼)	1220-2½ 747 (800-2½)

REIL Rwy 18 and 36
 MIRL Rwy 18-36