

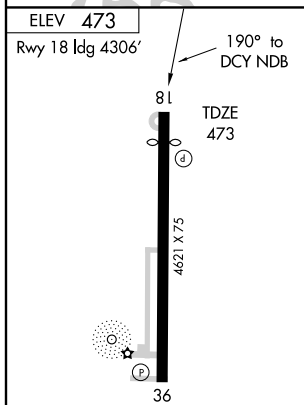
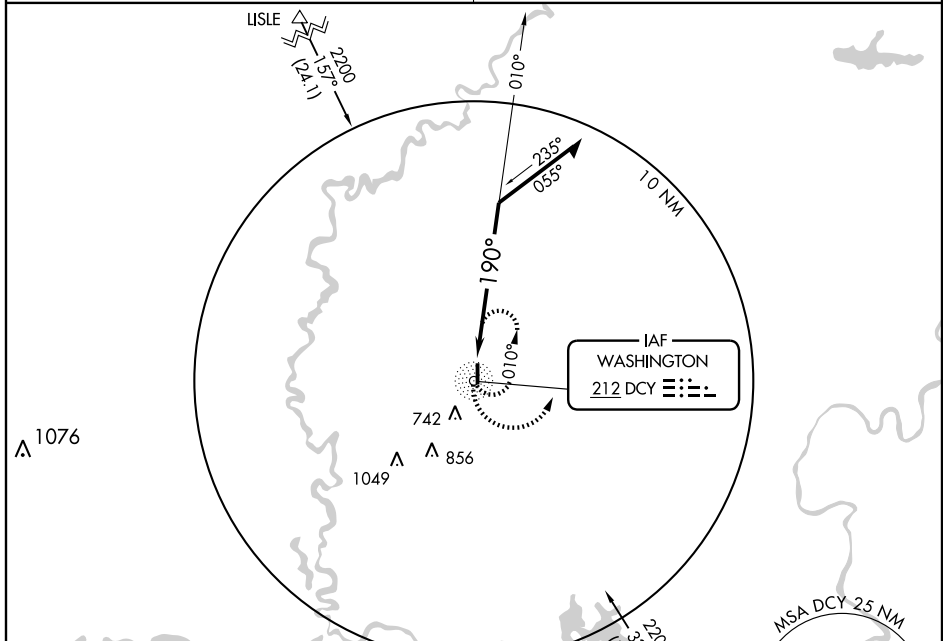
NDB RWY 18

WASHINGTON/ DAVIESS COUNTY (DCY)

NDB DCY 212	APP CRS 190°	Rwy ldg 4306 TDZE 473 Apt Elev 473
-----------------------	------------------------	---

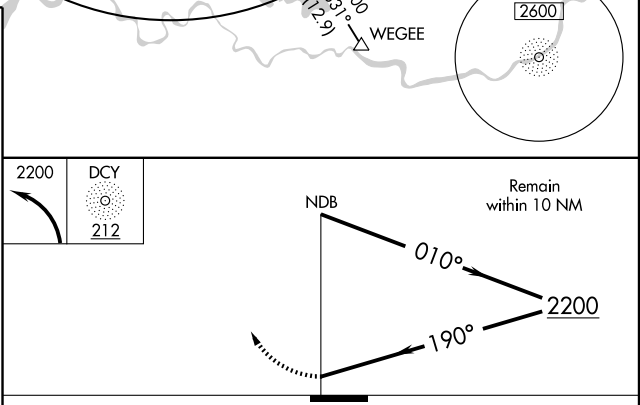
<p>▼ Use Evansville altimeter setting.</p> <p>▲ NA</p>	<p>MISSED APPROACH: Climbing left turn to 2200 direct DCY NDB and hold.</p>
--	---

<p>EVANSVILLE APP CON *</p> <p>125.6 267.9</p>	<p>UNICOM</p> <p>122.8 (CTAF) 1</p>
---	--



REIL Rwy 18 and 36
MIRL Rwy 18-36 1 *

Knots	60	90	120	150	180
Min:Sec					



CATEGORY	A	B	C	D
S-18	1120-1	647 (700-1)	1120-1¾ 647 (700-1¾)	1120-2 647 (700-2)
CIRCLING	1160-1 687 (700-1)	1220-1¼ 747 (800-1¼)	1220-2¼ 747 (800-2¼)	1220-2½ 747 (800-2½)

NDB RWY 18

EC-2, 22 OCT 2009 to 19 NOV 2009

EC-2, 22 OCT 2009 to 19 NOV 2009