

ROLLA, MISSOURI

AL-5967 (FAA)

VOR/DME VIH 117.7 Chan 124	APP CRS 195°	Rwy Idg TDZE Apt Elev	N/A N/A 987
--	------------------------	-----------------------------	--

VOR/DME or GPS-A

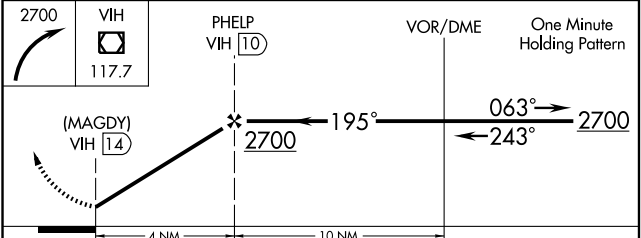
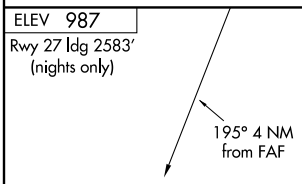
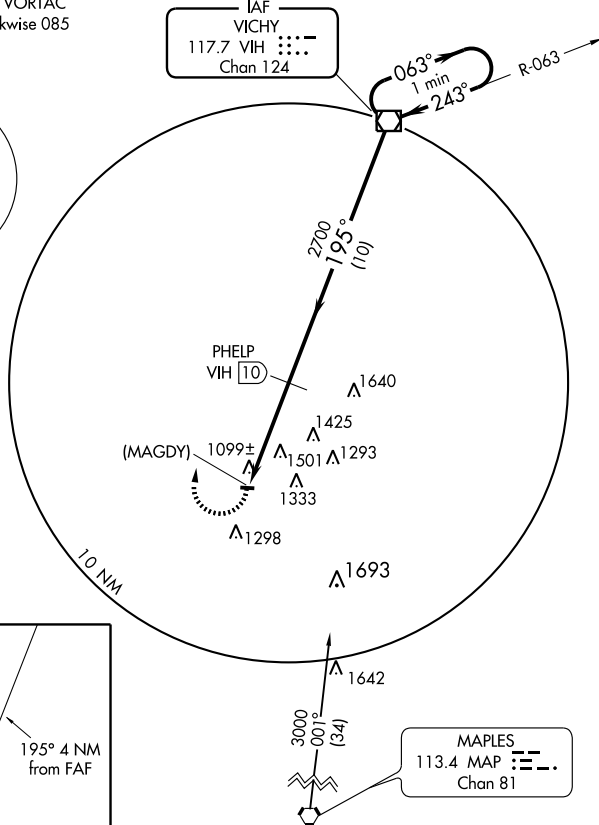
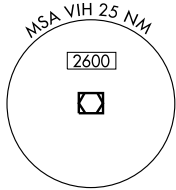
ROLLA DOWNTOWN (K07)

NA Use Rolla National Airport altimeter setting; when not available use Columbia altimeter setting and increase all MDAs 420 feet. Procedure not authorized at night.

MISSED APPROACH: Climbing right turn to 2700 direct to VIH VOR/DME and hold.

KANSAS CITY CENTER 128.35 284.67	UNICOM 122.8 (CTAF) 0
---	--

NoPT for arrivals on VIH VORTAC
airway radials 315 clockwise 085



CATEGORY	A	B	C	D
CIRCLING	1800-1 813 (900-1)	1840-1¼ 853 (900-1¼)	NA	

LIRL Rwy 9-27 0

ROLLA, MISSOURI
Amdt 2A 09071

37°56'N-91°49'W

ROLLA DOWNTOWN (K07)

VOR/DME or GPS-A

NC-3, 22 OCT 2009 to 19 NOV 2009

NC-3, 22 OCT 2009 to 19 NOV 2009