

RICHLAND, WASHINGTON

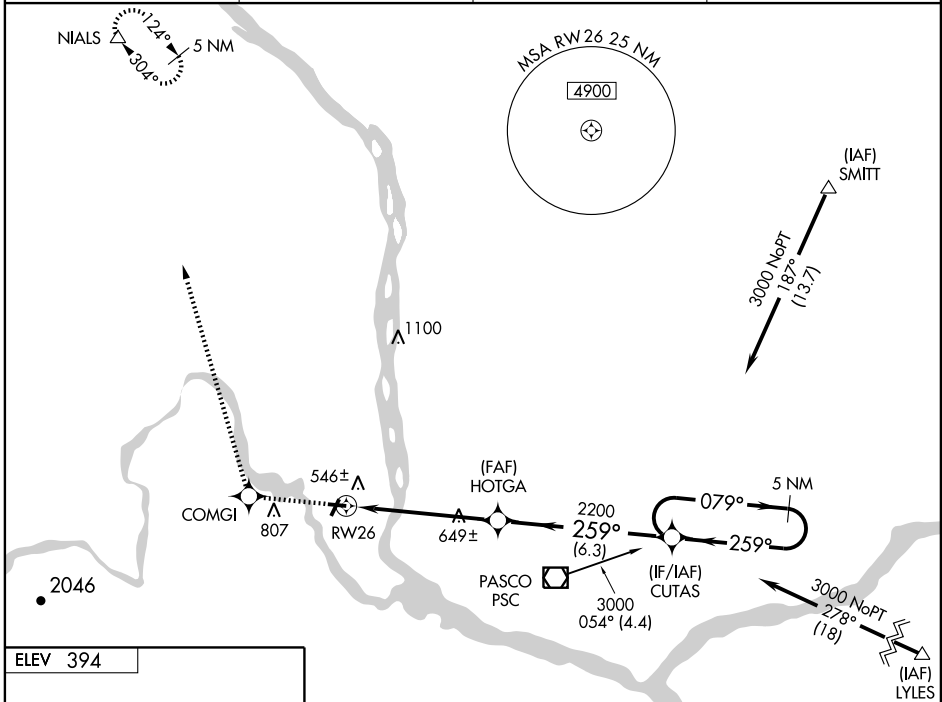
AL-5966 (FAA)

RNAV (GPS) RWY 26

RICHLAND (R.LD)

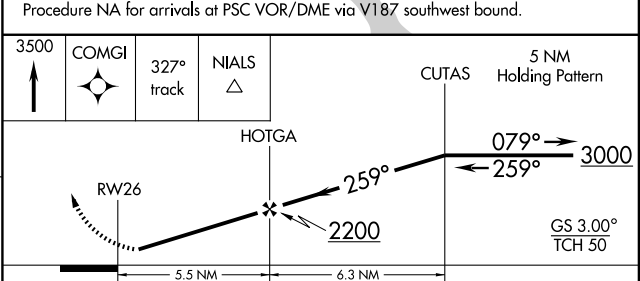
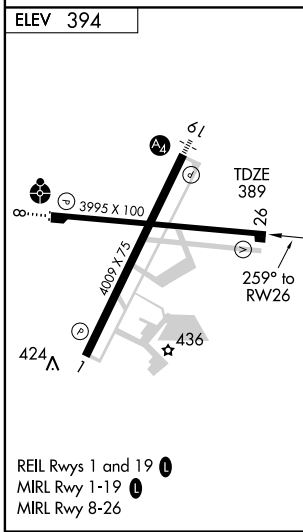
WAAS Chan 50299 W26A	APP CRS 259°	Rwy Idg TDZE Apt Elev	3995 389 394
-----------------------------------	------------------------	-----------------------------	---

DME/DME RNP-0.3 NA. Baro-VNAV NA.		MISSED APPROACH: Climb to 3500 direct COMGI and via 327° track to NIALS and hold.	
AWOS-3 132.675	CHINOOK APP CON ★ 128.75 377.2	CLNC DEL 122.4	UNICOM 122.7 (CTAF)



NW-1, 22 OCT 2009 to 19 NOV 2009

NW-1, 22 OCT 2009 to 19 NOV 2009



CATEGORY	A	B	C	D
LPV DA	676-1 287 (300-1)			
LNAV/VNAV DA	945-2 556 (600-2)			
LNAV MDA	920-1	531 (600-1)	920-1½ 531 (600-1½)	920-1¾ 531 (600-1¾)
CIRCLING	1000-2 606 (700-2)		1140-2½ 746 (800-2½)	

RICHLAND, WASHINGTON
Orig-B 09239

46°18'N-119°18'W

RNAV (GPS) RWY 26