

RICHLAND, WASHINGTON

AL-5966 (FAA)

RNAV (GPS) RWY 19

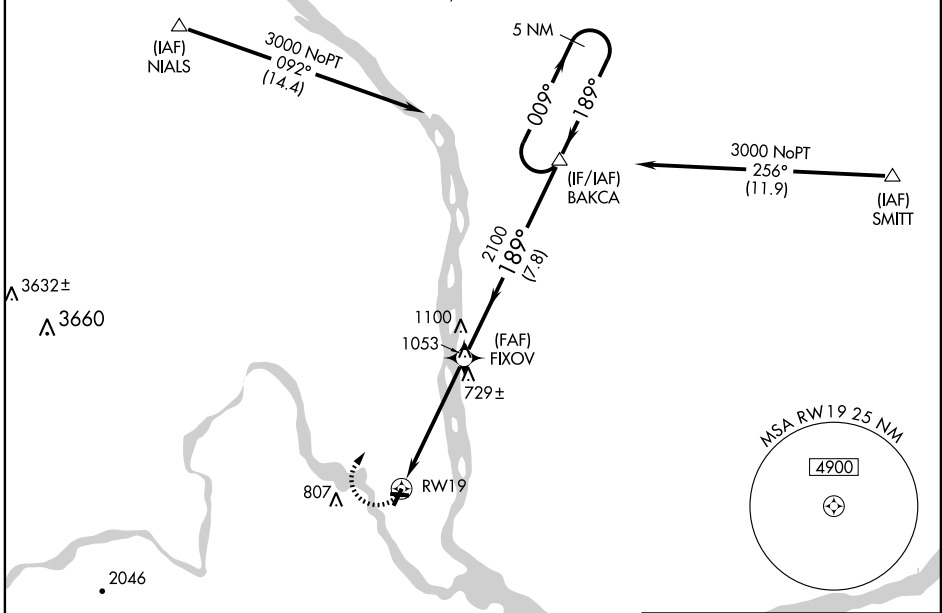
RICHLAND (RLD)

APP CRS 189°	Rwy Idg 4009
	TDZE 390
	Apt Elev 394

 DME/DME-RNP-0.3 NA. Inoperative table does not apply to Cat. C.	 MALS	MISSED APPROACH: Climbing right turn to 3000 direct BAKCA and hold.

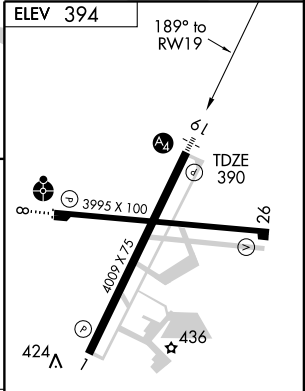
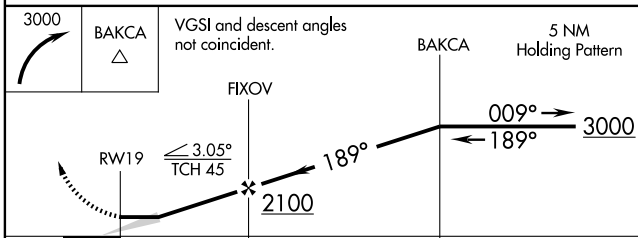
AWOS-3 132.675	CHINOOK APP CON ★ 128.75 377.2	CLNC DEL 122.4	UNICOM 122.7 (CTAF) 0
--------------------------	--	--------------------------	---------------------------------

Procedure NA for arrivals at NIALS via V187 northwest bound, and arrivals at SMITT via V204 northbound.



NW-1, 22 OCT 2009 to 19 NOV 2009

NW-1, 22 OCT 2009 to 19 NOV 2009



CATEGORY	A	B	C	D
LNAV MDA	1000-¾ 610 (700-¾)		1000-1¾ 610 (700-1¾)	1180-2½ 790 (800-2½)
CIRCLING	1000-1 606 (700-1)		1000-1¾ 606 (700-1¾)	1180-2½ 786 (800-2½)

REIL Rwy 1 and 19 0
MIRL Rwy 1-19 0
MIRL Rwy 8-26

RICHLAND, WASHINGTON
Orig-B 09239

46°18'N-119°18'W

RNAV (GPS) RWY 19

RICHLAND (RLD)