

# VOR RWY 16

RICHMOND/ASHLAND/ HANOVER COUNTY MUNI (OFP)

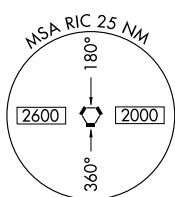
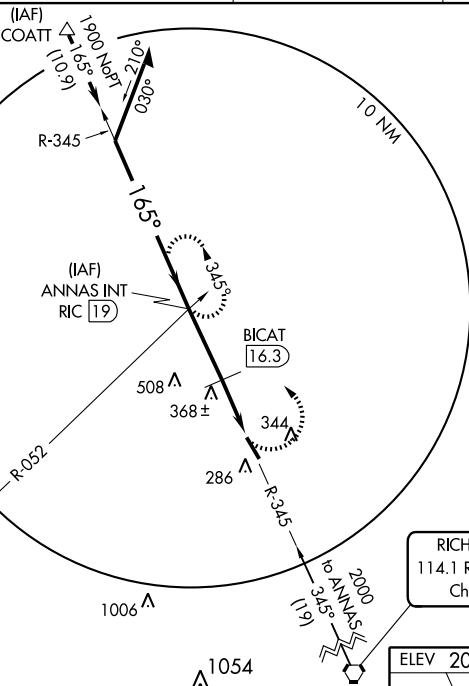
VORTAC RIC <b>114.1</b> Chan <b>88</b>	APP CRS <b>165°</b>	Rwy Idg TDZE Apt Elev	<b>5402</b> <b>207</b> <b>207</b>
--	------------------------	-----------------------------	---

**⚠** When local altimeter setting not received, use Richmond Intl altimeter setting and increase all MDA 40 feet. Circling Rwy 34 NA at night. Visibility reduction by helicopters NA.

**MISSED APPROACH:** Climbing left turn to 2000 via RIC R-345 to ANNAS INT/19 DME and hold.

ASOS <b>119.025</b>	POTOMAC APP CON <b>134.7 307.2</b>	CLNC DEL <b>125.4</b>	UNICOM <b>122.7 (CTAF)</b>
------------------------	---------------------------------------	--------------------------	-------------------------------

Procedure NA for arrival at COATT via V155 Northeast bound.

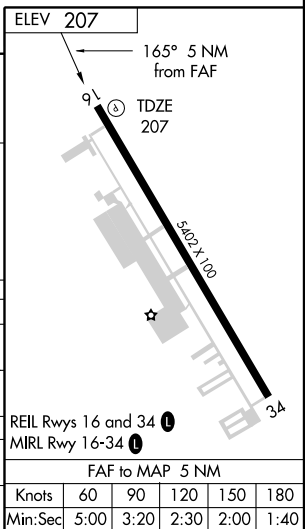
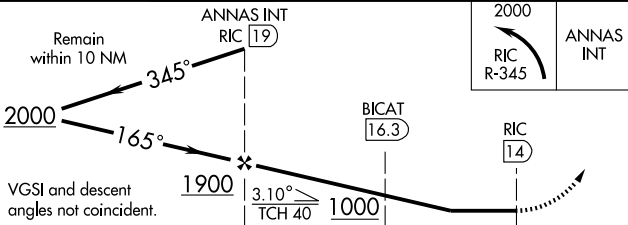


NE-3, 22 OCT 2009 to 19 NOV 2009

NE-3, 22 OCT 2009 to 19 NOV 2009

FLAT ROCK  
113.3 FAK  
Chan 80

RICHMOND  
114.1 RIC  
Chan 88



CATEGORY	A	B	C	D
S-16	1000 - 1 795 (800-1)	1000 - 1¼ 795 (800-1¼)	1000 - 2¼ 795 (800-2¼)	1000 - 2½ 795 (800-2½)
CIRCLING	1000 - 1 795 (800-1)	1000 - 1¼ 795 (800-1¼)	1000 - 2¼ 795 (800-2¼)	1000 - 2½ 795 (800-2½)
BICAT FIX MINIMUMS				
S-16	680 - 1	475 (500-1)	680 - 1¼ 475 (500-1¼)	680 - 1½ 475 (500-1½)
CIRCLING	680 - 1	475 (500-1)	680 - 1½ 475 (500-1½)	760 - 2 555 (600-2)

REIL Rwsy 16 and 34  
MRL Rwy 16-34

FAF to MAP 5 NM					
Knots	60	90	120	150	180
Min:Sec	5:00	3:20	2:30	2:00	1:40

# VOR RWY 16