

# RNAV (GPS) RWY 16

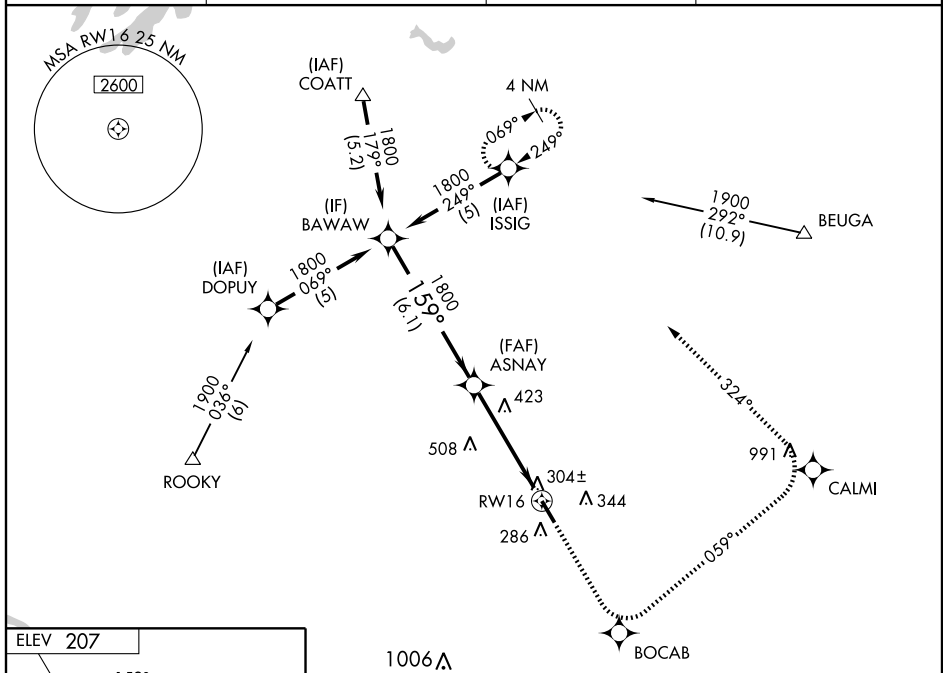
WAAS CH <b>42904</b> W16A	APP CRS <b>159°</b>	Rwy ldg <b>5402</b> TDZE <b>207</b> Apt Elev <b>207</b>
---------------------------------	------------------------	---

RICHMOND/ASHLAND / HANOVER COUNTY MUNI (OFP)

**▼** If local altimeter setting not received, use Richmond Intl altimeter setting and increase all DAs 37 feet and all MDAs 40 feet. Baro-VNAV NA when using Richmond Intl altimeter setting. For uncompensated Baro-VNAV systems, LNAV/VNAV NA below -1.5°C (5°F) or above 48°C (118°F). DME/DME RNP-0.3 NA. Visibility reduction by helicopters NA. Circling to Rwy 34 NA at night.

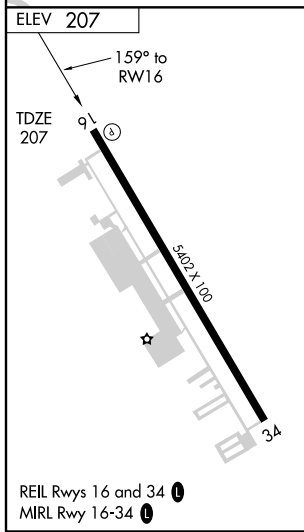
**MISSED APPROACH:** Climb to 2000 direct BOCAB and left turn via 059° track to CALMI and left turn via 324° track to ISSIG and hold.

ASOS <b>119.025</b>	POTOMAC APP CON <b>134.7 307.2</b>	CLNC DEL <b>125.4</b>	UNICOM <b>122.7 (CTAF) 0</b>
------------------------	---------------------------------------	--------------------------	---------------------------------



NE-3, 22 OCT 2009 to 19 NOV 2009

NE-3, 22 OCT 2009 to 19 NOV 2009



BAWAW 1800 Procedure Turn NA GS 3.00° TCH 40	2000	BOCAB	CALMI	ISSIG
	↑	✧	✧	✧
		TRK 059°	TRK 324°	
ASNAY	1800 ← 159° → RW16 6.1 NM      4.8 NM			
CATEGORY	A	B	C	D
LPV DA	535-1 ¼ 328 (400-1 ¼)			
LNAV/VNAV DA	564-1 ¼ 357 (400-1 ¼)			
LNAV MDA	680-1	473 (500-1)	680-1 ¼ 473 (500-1 ¼)	680-1 ½ 473 (500-1 ½)
CIRCLING	680-1 473 (500-1)	700-1 493 (500-1)	700-1 ½ 493 (500-1 ½)	760-2 553 (600-2)