

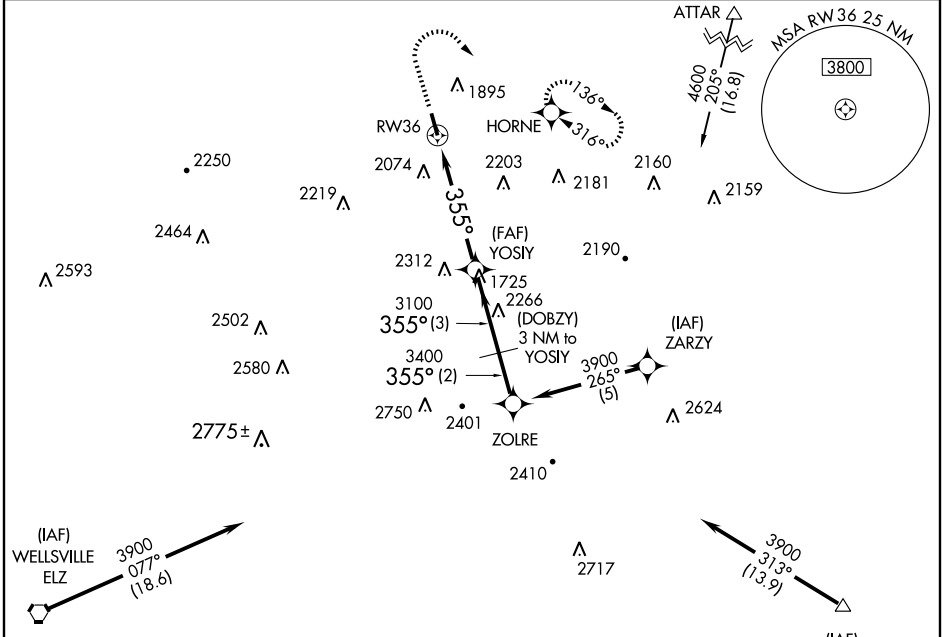
GPS RWY 36

HORNELL MUNI (4G6)

APP CRS	Rwy ldg	5000
355°	TDZE	1196
	Apt Elev	1220

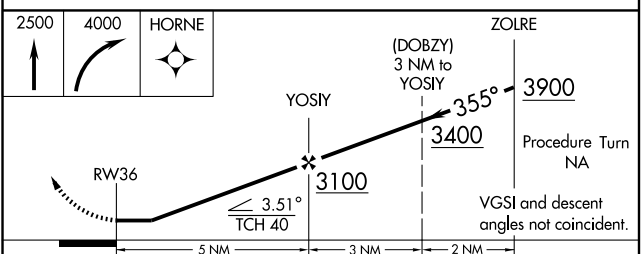
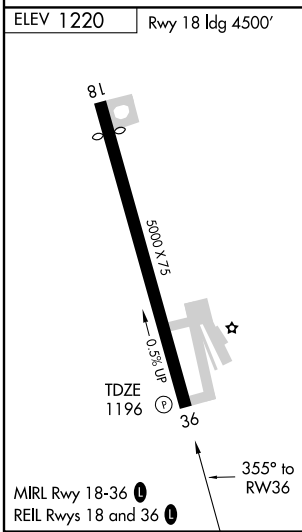
<p>▼ Obtain local altimeter setting on CTAF; when not received, use Elmira/Corning Rgnl altimeter setting.</p> <p>▲ NA</p>	<p>MISSED APPROACH: Climb to 2500 then climbing right turn to 4000 direct HORNE WP and hold.</p>
--	--

<p>AWOS-3 118.475</p>	<p>CLEVELAND CENTER 124.325 353.850</p>	<p>UNICOM 122.7 (CTAF)</p>
----------------------------------	--	---------------------------------------



NE-2, 22 OCT 2009 to 19 NOV 2009

NE-2, 22 OCT 2009 to 19 NOV 2009



CATEGORY	A	B	C	D
S-36	2260-1¼ 1064 (1100-1¼)	2260-1½ 1064 (1100-1½)	2260-3 1064 (1100-3)	NA
CIRCLING	2320-1¼ 1100 (1100-1¼)	2320-1½ 1100 (1100-1½)	2360-3 1140 (1200-3)	NA
ELMIRA/CORNING RGNL ALTIMETER SETTING MINIMUMS				
S-36	2520-1¼ 1324 (1300-1¼)	2520-1½ 1324 (1300-1½)	2520-3 1324 (1300-3)	NA
CIRCLING	2600-1¼ 1380 (1400-1¼)	2600-1½ 1380 (1400-1½)	2620-3 1400 (1400-3)	NA