

NDB RWY 9
FAIRFIELD MUNI (FWC)

NDB FWC 257	APP CRS 085°	Rwy Idg 4000
		TDZE 436
		Apt Elev 436

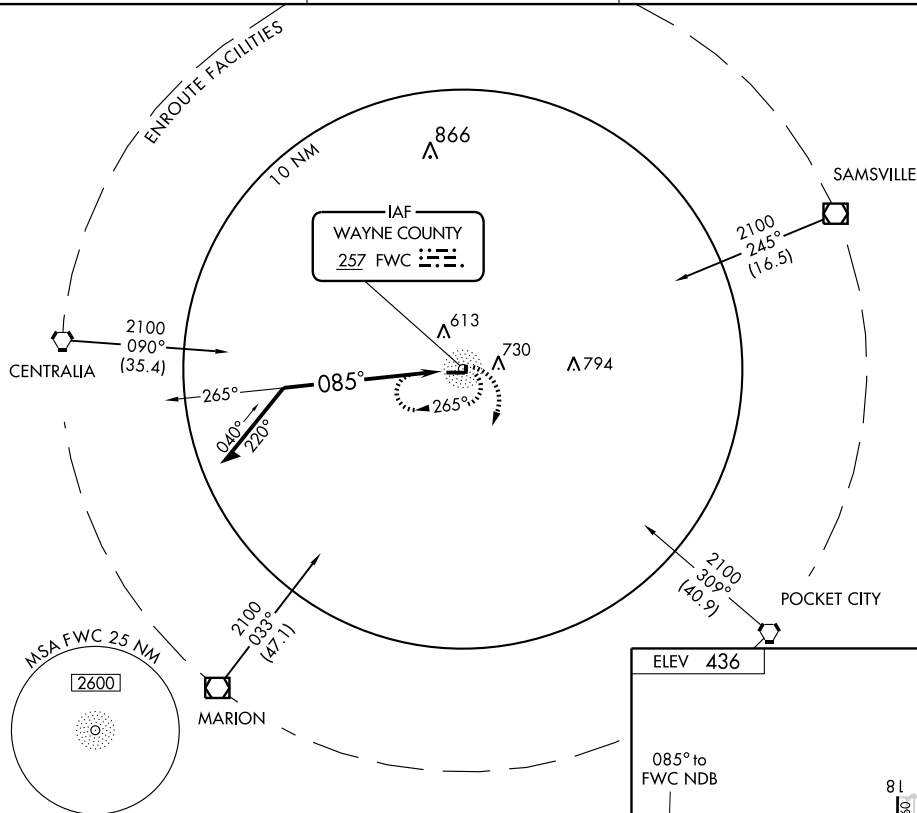


MISSED APPROACH: Climbing right turn to 2100 in the FWC NDB holding pattern.

AWOS-3
119.425

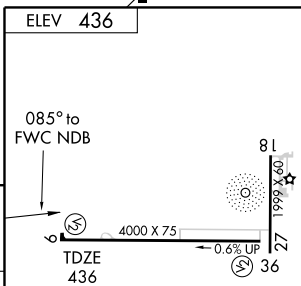
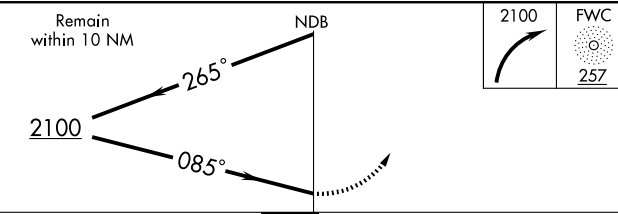
KANSAS CITY CENTER
127.7 317.7

UNICOM
123.05 (CTAF)



EC-3, 22 OCT 2009 to 19 NOV 2009

EC-3, 22 OCT 2009 to 19 NOV 2009



CATEGORY	A	B	C	D
S-9	1100-1	664 (700-1)	1100-1 $\frac{3}{4}$ 664 (700-1 $\frac{3}{4}$)	NA
CIRCLING	1100-1	664 (700-1)	1100-1 $\frac{3}{4}$ 664 (700-1 $\frac{3}{4}$)	NA

REIL Rwy 9

MIRL Rlys 18-36 and 9-27

Knots	60	90	120	150	180
Min:Sec					