

VENICE, FLORIDA

AL-5960 (FAA)

# RNAV (GPS) RWY 13

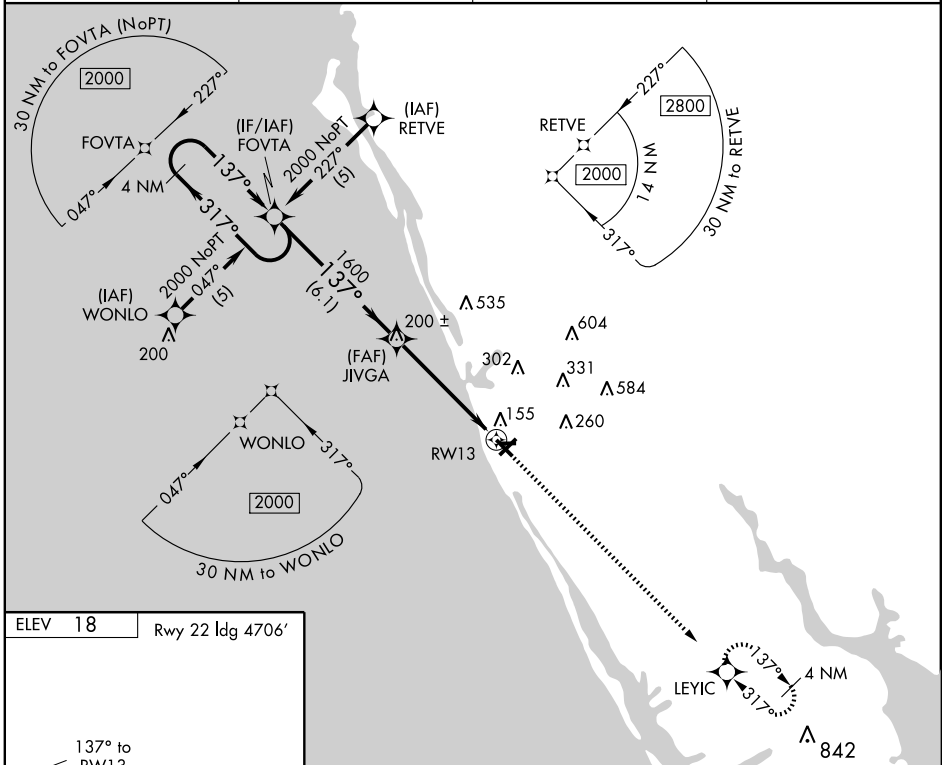
VENICE MUNI (VNC)

APP CRS <b>137°</b>	Rwy ldg <b>4999</b>
	TDZE <b>16</b>
	Apt Elev <b>18</b>

**NA** When local altimeter setting not received, use Sarasota altimeter setting and increase all MDA 60 feet; Increase LNAV Cat. C visibility ¼ mile. DME/DME RNP-0.3 NA. Visibility reduction by helicopters NA. VDP NA when using Sarasota altimeter setting.

MISSED APPROACH: Climb to 2000 direct LEYIC and hold.

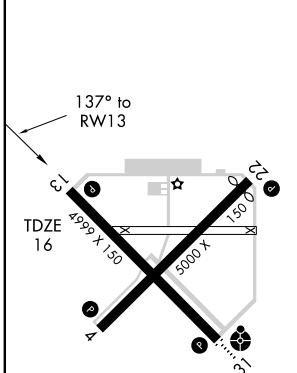
AWOS-1 <b>119.275</b>	TAMPA APP CON <b>119.65 353.575</b>	CLNC DEL <b>118.075</b>	UNICOM <b>122.725 (CTAF)</b>
--------------------------	--	----------------------------	---------------------------------



SE-3, 22 OCT 2009 to 19 NOV 2009

SE-3, 22 OCT 2009 to 19 NOV 2009

ELEV 18	Rwy 22 ldg 4706'
---------	------------------



MIRL Rwy 4-22 and 13-31  
REIL Rwy 4, 22, 13 and 31

4 NM Holding Pattern	FOVTA		2000	LEYIC
	← 317°	→ 137°	↑	✦
2000		1600	1.3 NM to RWY 13	
6.1 NM		3.5 NM	1.3	
CATEGORY	A	B	C	D
LNAV MDA	460-1	444 (500-1)	460-1¼ 444 (500-1½)	460-1½ 444 (500-1½)
CIRCLING	500-1	482 (500-1)	500-1½ 482 (500-1½)	600-2 582 (600-2)

VENICE, FLORIDA  
Orig 08269

27° 04' N - 82° 26' W

# RNAV (GPS) RWY 13

VENICE MUNI (VNC)