

LLANO, TEXAS

AL-5959 (FAA)

09295

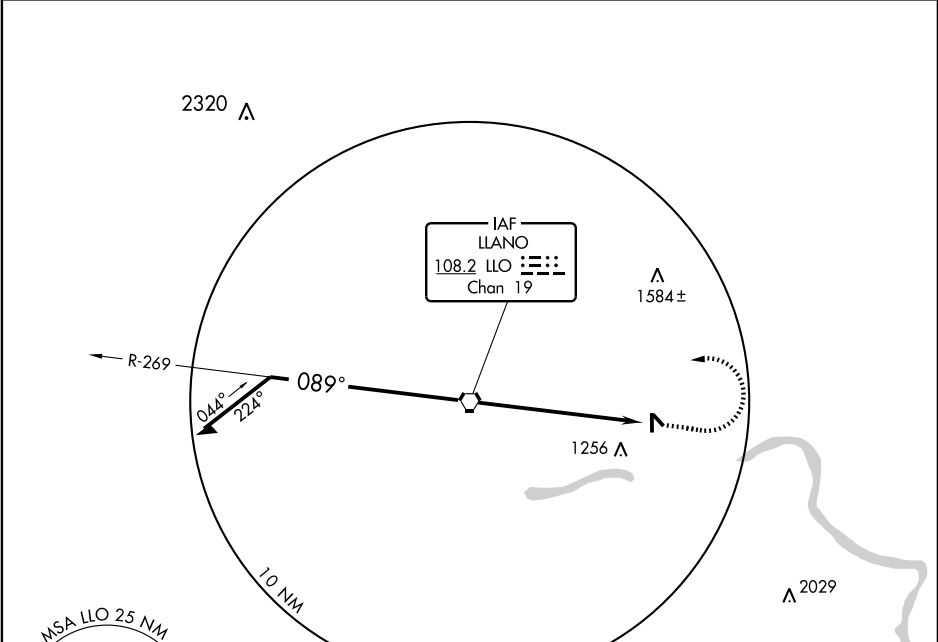
VORTAC LLO 108.2 Chan 19	APP CRS 089°	Rwy Idg TDZE Apt Elev	N/A N/A 1102
---------------------------------------	------------------------	-----------------------------	---

VOR-A
LLANO MUNI (A.QO)

▼ When local altimeter setting not received, use Burnet altimeter setting and increase all MDA 80 feet, and Circling Cat B visibility ¼ mile.

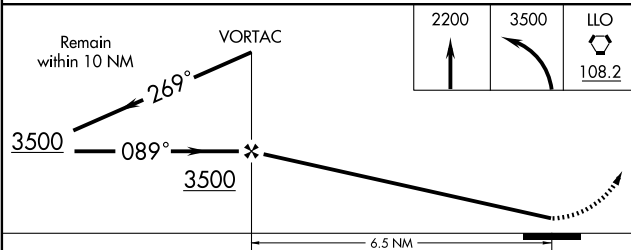
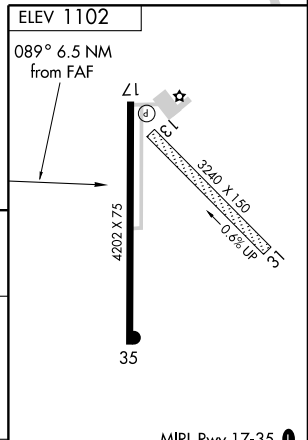
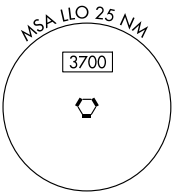
▲ NA MISSED APPROACH: Climb to 2200 then climbing left turn to 3500 direct LLO VORTAC.

AWOS-3 119.425	HOUSTON CENTER 132.35 317.5	UNICOM 122.8 (CTAF) ①
--------------------------	---------------------------------------	--



SC-3, 22 OCT 2009 to 19 NOV 2009

SC-3, 22 OCT 2009 to 19 NOV 2009



CATEGORY	A	B	C	D	FAF to MAP 6.5 NM					
CIRCLING	1800-1	698 (700-1)	NA		Knots	60	90	120	150	180
					Min:Sec	6:30	4:20	3:15	2:36	2:10

LLANO, TEXAS
Amdt 3A 22OCT09

30° 47' N-98° 40' W

LLANO MUNI (A.QO)
VOR-A