


RNAV (GPS) RWY 4

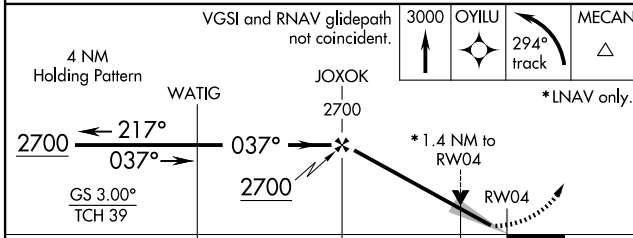
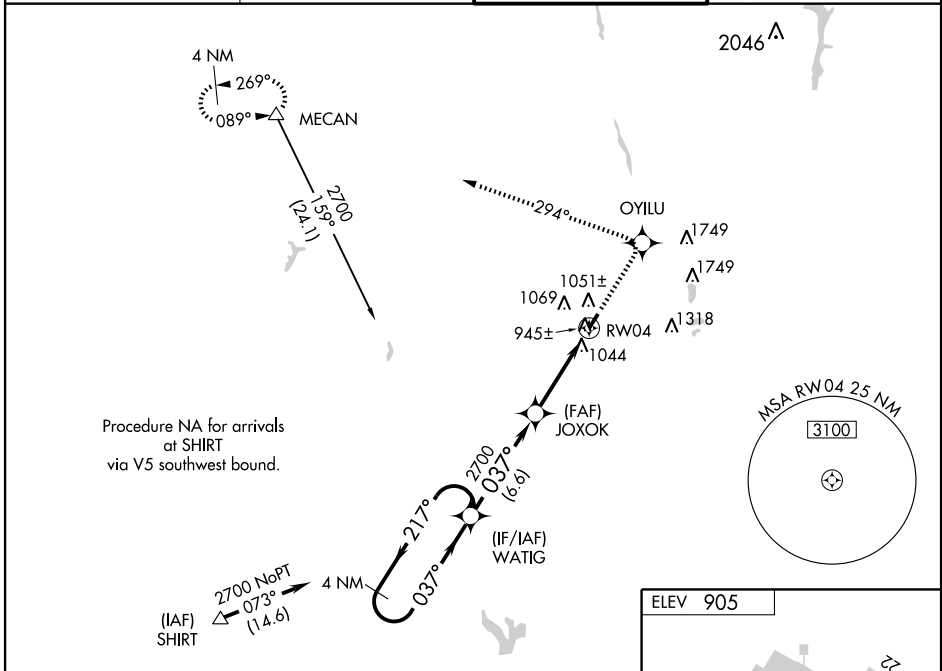
COLUMBUS/BOLTON FIELD (TZR)

WAAS CH 90505 W04A	APP CRS 037°	Rwy Idg TDZE Apt Elev	5500 905 905
--	------------------------	-----------------------------	---

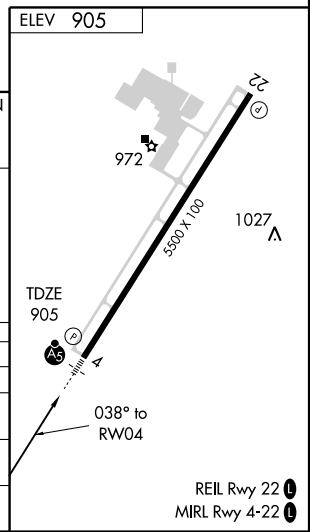
▽ For uncompensated Baro-VNAV systems, LNAV/VNAV NA below -16°C (4°F) or above 47°C (116°F). DME/DME RNP-0.3 NA. When local altimeter setting not received, use Port Columbus altimeter setting and increase all DA 42 feet and all MDA 60 feet. Increase LNAV/VNAV visibility ¼ mile Cats A/B/C, LNAV Cat C/D ½ mile. Baro-VNAV and VDP NA when using Port Columbus altimeter setting. For inoperative MALSRL increase LNAV/VNAV Cat D visibility to 1.

MALSRL

MISSED APPROACH:
 Climb to 3000 direct OYILU and left turn via 294° track to MECAN and hold..

AWOS-3 135.925	COLUMBUS APP CON 132.3 279.6	BOLTON TOWER★ 128.1 (CTAF) 0	GND CON 121.8
--------------------------	--	--	-------------------------



CATEGORY	A	B	C	D
LPV DA	1105-½		200 (200-½)	
LNAV/VNAV DA	1195-½ 290 (300-½)		1195-¾ 290 (300-¾)	
LNAV MDA	1360-½ 455 (500-½)	1360-¾ 455 (500-¾)		1360-1 455 (500-1)
CIRCLING	1420-1 515 (600-1)	1420-½ 515 (600-½)		1460-2 555 (600-2)



EC-2, 22 OCT 2009 to 19 NOV 2009

EC-2, 22 OCT 2009 to 19 NOV 2009