

# VOR RWY 14

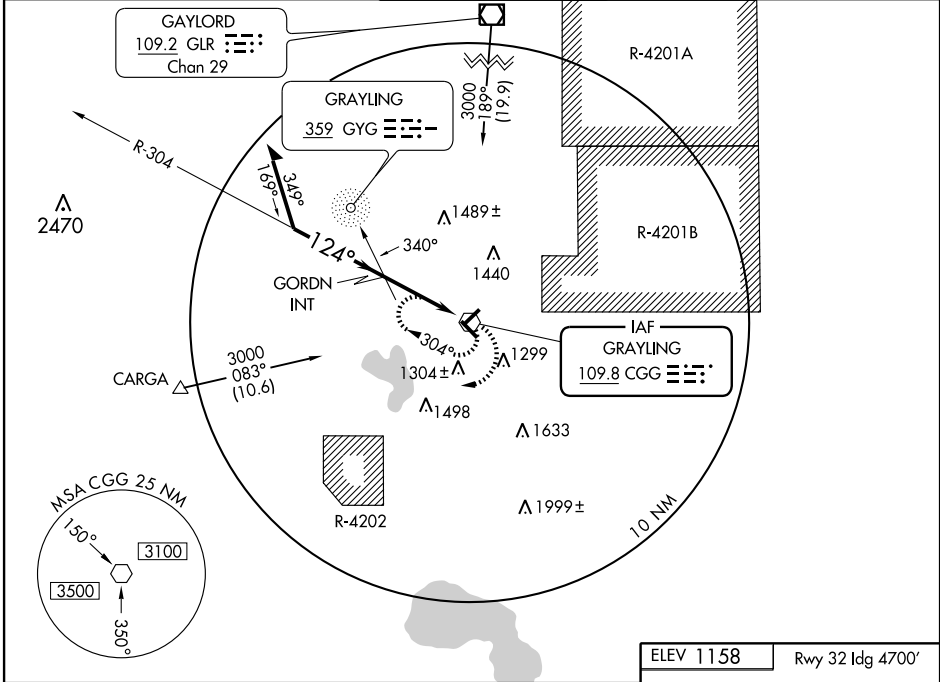
GRAYLING AAF (GOV)

VOR CGG <b>109.8</b>	APP CRS <b>124°</b>	Rwy Idg <b>5000</b>
		TDZE <b>1153</b>
		Apt Elev <b>1158</b>

**NA** Use Houghton Lake altimeter setting; when not received, use Traverse City altimeter setting and increase all MDA's 160 feet and all visibilities 1/2 mile.

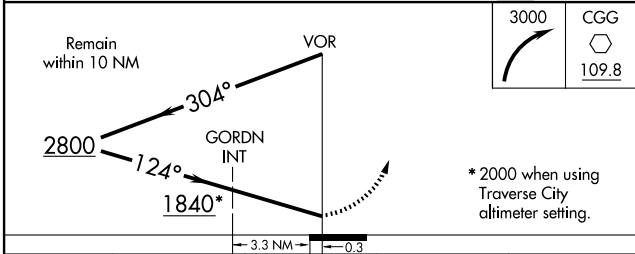
MISSED APPROACH: Climbing right turn to 3000 in CGG VOR holding pattern.

AWOS-3 <b>119.075</b>	MINNEAPOLIS CENTER <b>132.9 338.3</b>	GRAYLING TOWER * <b>126.2 241.0</b>	GND CON <b>121.9</b>	UNICOM <b>122.8</b> (CTAF) <b>0</b>
--------------------------	--	--	-------------------------	--



EC-1, 22 OCT 2009 to 19 NOV 2009

EC-1, 22 OCT 2009 to 19 NOV 2009



CATEGORY	A	B	C	D
S-14	1840-1 687 (700-1)		1840-2 687 (700-2)	1840-2 1/4 687 (700-2 1/4)
CIRCLING	1840-1 682 (700-1)		1840-2 682 (700-2)	1840-2 1/4 682 (700-2 1/4)
GORDN INT MINIMUMS				
S-14	1720-1 567 (600-1)		1720-1 1/2 567 (600-1 1/2)	1720-1 3/4 567 (600-1 3/4)
CIRCLING	1720-1 562 (600-1)	1780-1 622 (700-1)	1780-1 3/4 622 (700-1 3/4)	1800-2 642 (700-2)

