

BRECKENRIDGE, TEXAS

AL-5956 (FAA)

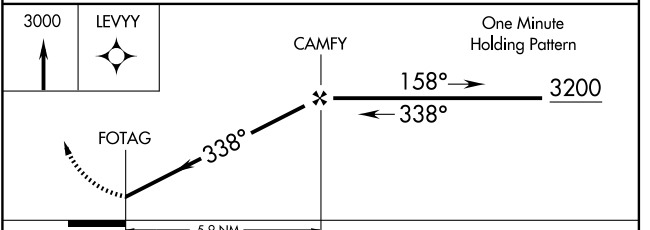
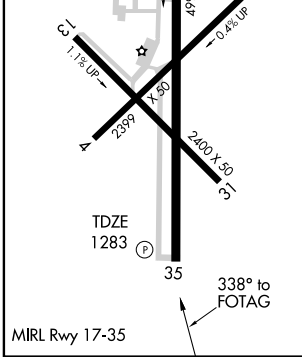
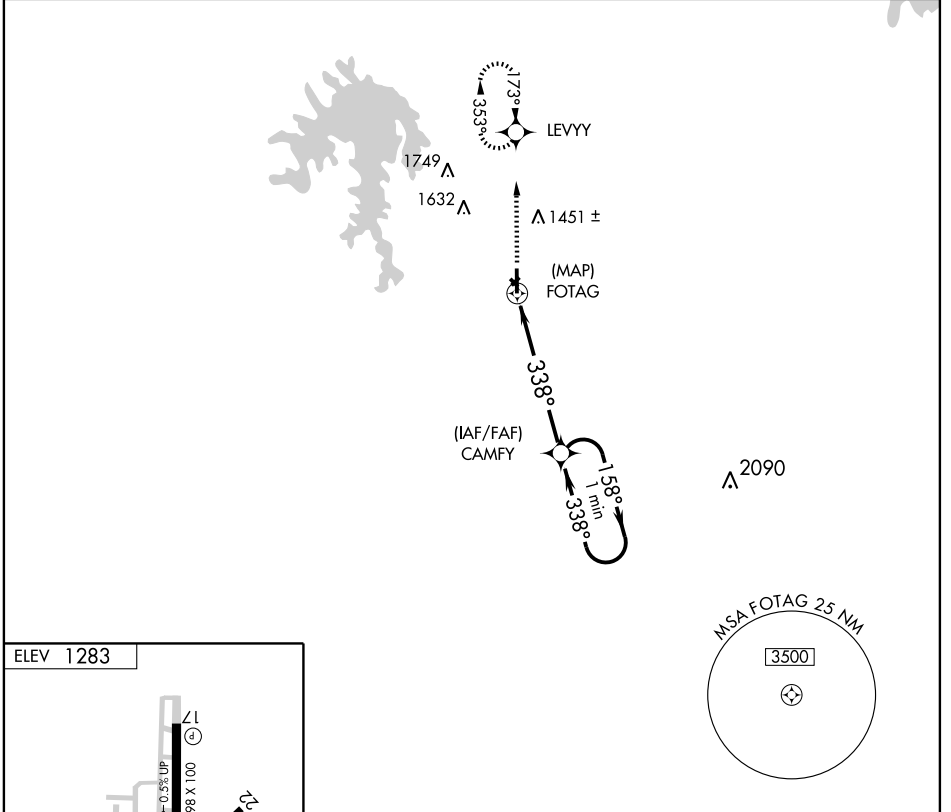
# GPS RWY 35

BRECKENRIDGE/STEPHENS COUNTY (BKD)

APP CRS <b>338°</b>	Rwy Idg <b>4998</b>
	TDZE <b>1283</b>
	Apt Elev <b>1283</b>

<p><b>▲ NA</b></p> <p>Use Abilene Regional altimeter setting.</p>	<p>MISSED APPROACH: Climb to 3000 direct LEVYY and hold.</p>	
	<p>AWOS-3 <b>120.175</b></p>	<p>FORT WORTH CENTER <b>127.0 360.6</b></p>

<p>AWOS-3 <b>120.175</b></p>	<p>FORT WORTH CENTER <b>127.0 360.6</b></p>	<p>UNICOM <b>122.8 (CTAF)</b></p>
----------------------------------	---	---------------------------------------



CATEGORY	A	B	C	D
S-35	1900-1	617 (700-1)	1900-1¾ 617 (700-1¾)	1900-2 617 (700-2)
CIRCLING	1900-1	617 (700-1)	1900-1¾ 617 (700-1¾)	1940-2 657 (700-2)

BRECKENRIDGE, TEXAS  
Orig 09267

BRECKENRIDGE/STEPHENS COUNTY (BKD)

32°43'N-98°53'W

# GPS RWY 35

SC-2, 22 OCT 2009 to 19 NOV 2009

SC-2, 22 OCT 2009 to 19 NOV 2009