

BATAVIA, OHIO

AL-5955 (FAA)

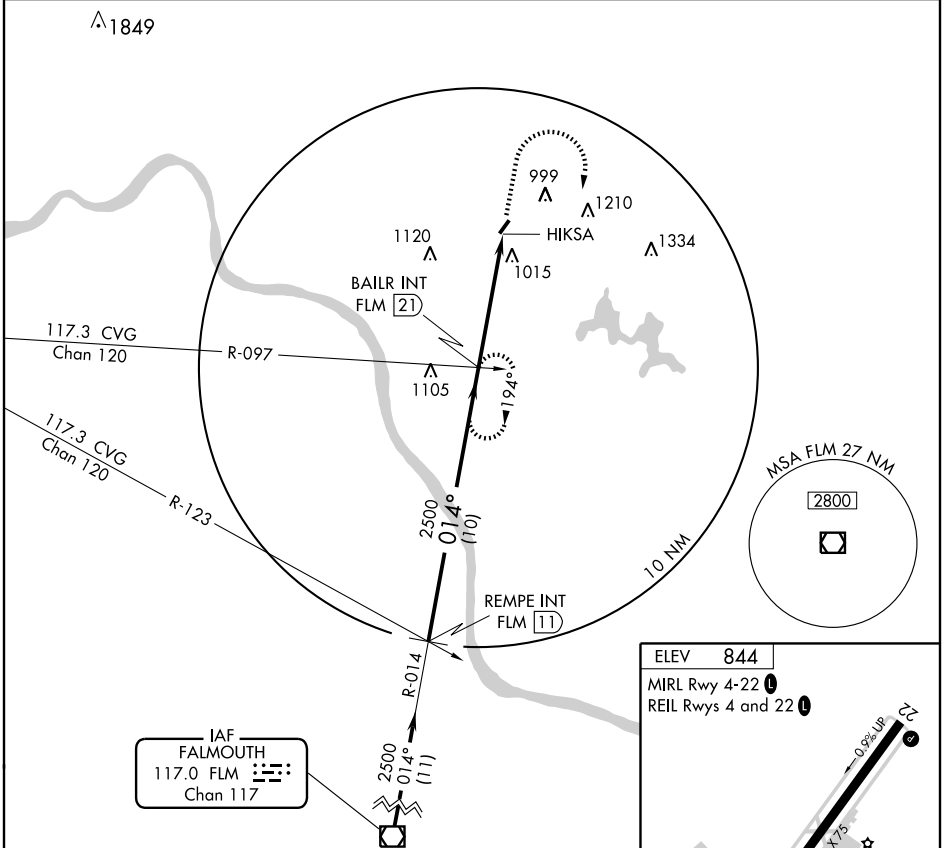
VOR-B

BATAVIA / CLERMONT COUNTY (I69)

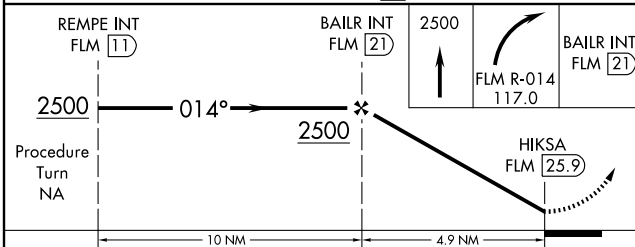
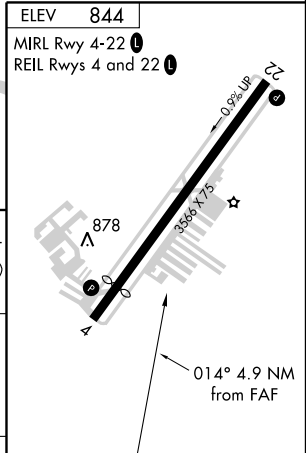
VOR/DME FLM 117.0 Chan 117	APP CRS 014°	Rwy Idg TDZE Apt Elev N/A N/A 844
--	------------------------	---

<p>▲ NA Use Cincinnati-Blue Ash altimeter setting, if not received, use Cincinnati Lunken Field altimeter setting and increase all MDAs 40 feet.</p>	<p>MISSED APPROACH: Climb to 2500 then right turn via FLM R-014 to BAILR Int/21 DME and hold.</p>
---	---

CINCINNATI-BLUE ASH AWOS-3 118.475	CINCINNATI APP CON 121.0 257.725	CLNC DEL 124.9	UNICOM 122.975 (CTAF) ①
---	--	--------------------------	-----------------------------------



IAF
FALMOUTH
117.0 FLM
Chan 117



CATEGORY	A	B	C	D	FAF to MAP 4.9 NM					
CIRCLING	1420-1 576 (600-1)	1420-1¼ 576 (600-1¼)	1420-1½ 576 (600-1½)	NA	Knots	60	90	120	150	180
					Min:Sec	4:54	3:16	2:27	1:58	1:38

BATAVIA, OHIO

Amdt 7 09127

BATAVIA / CLERMONT COUNTY (I69)

39°05'N - 84°13'W

VOR-B

EC-2, 22 OCT 2009 to 19 NOV 2009

EC-2, 22 OCT 2009 to 19 NOV 2009