

RNAV (GPS) RWY 4

BATAVIA / CLERMONT COUNTY (I69)

APP CRS	Rwy Idg	3170
040°	TDZE	841
	Apt Elev	844

NA DME/DME RNP-0.3 NA. Use Cincinnati-Blue Ash altimeter setting, if not received, use Cincinnati Lunken Field altimeter setting and increase all MDAs 40 feet.

MISSED APPROACH: Climb to 2500 direct JERAL and hold.

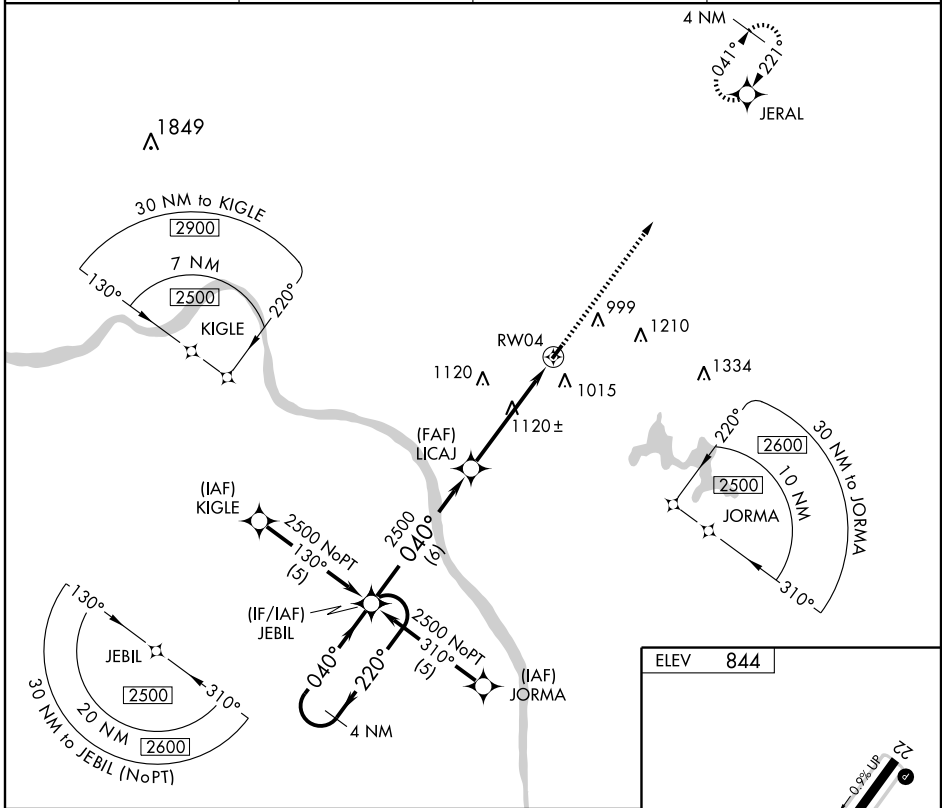
CINCINNATI-BLUE ASH
AWOS-3
118.475

CINCINNATI APP CON
121.0 257.725

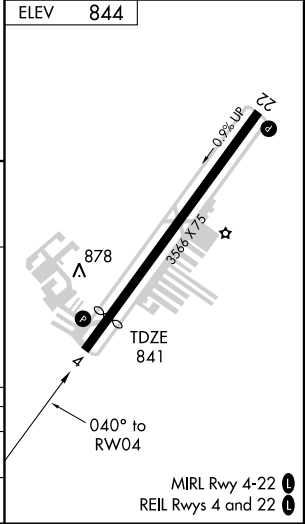
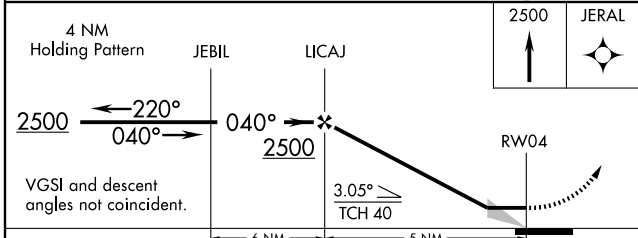
CLNC DEL
124.9

UNICOM
122.975 (CTAF) 1

EC-2, 22 OCT 2009 to 19 NOV 2009



EC-2, 22 OCT 2009 to 19 NOV 2009



CATEGORY	A	B	C	D
LNVA MDA	1460-1	619 (700-1)	1460-1¾ 619 (700-1¾)	NA
CIRCLING	1460-1	616 (700-1)	1460-1¾ 616 (700-1¾)	NA