

NDB RWY 22

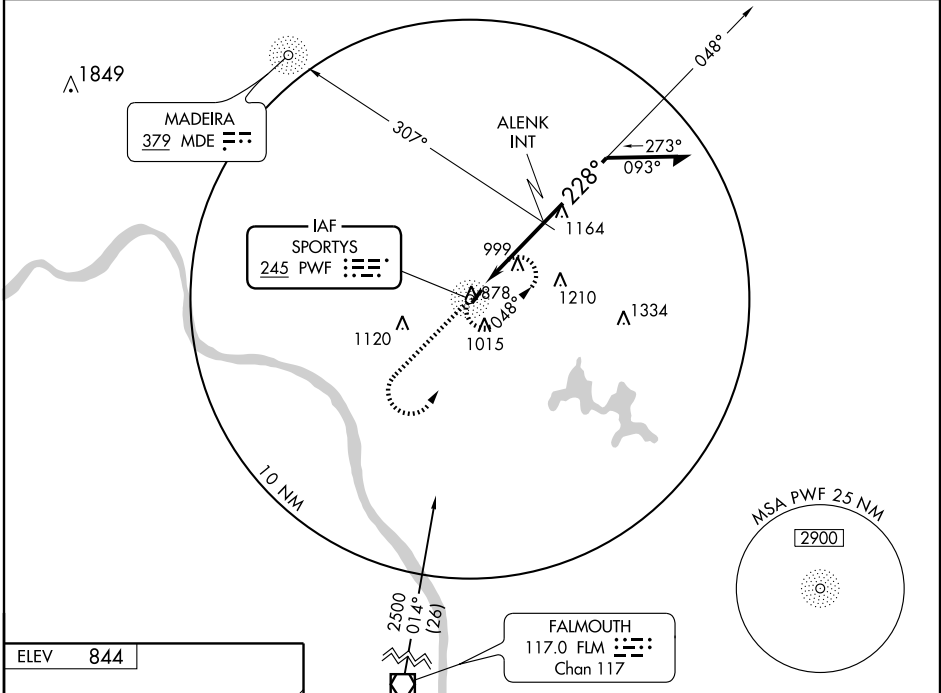
BATAVIA / CLERMONT COUNTY (I69)

NDB PWF 245	APP CRS 228°	Rwy Idg TDZE Apt Elev	3566 841 844
-----------------------	------------------------	-----------------------------	---

NA Use Cincinnati-Blue Ash altimeter setting, if not received, use Cincinnati Lunken Field altimeter setting and increase all MDAs 40 feet.

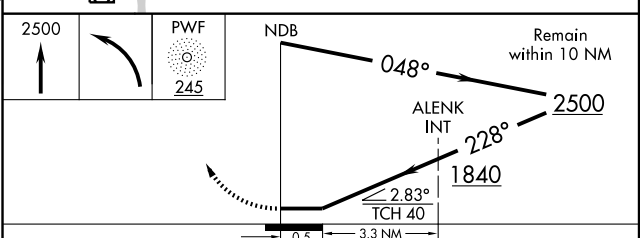
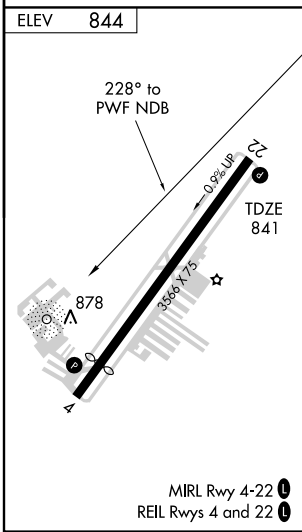
MISSED APPROACH: Climb to 2500 then left turn direct PWF NDB and hold.

CINCINNATI-BLUE ASH AWOS-3 118.475	CINCINNATI APP CON 121.0 257.725	CLNC DEL 124.9	UNICOM 122.975 (CTAF) 1
---	--	--------------------------	-----------------------------------



EC-2, 22 OCT 2009 to 19 NOV 2009

EC-2, 22 OCT 2009 to 19 NOV 2009



CATEGORY	A	B	C	D
S-22	1840-1¼ 999 (1000-1¼)	1840-1½ 999 (1000-1½)	1840-3 999 (1000-3)	NA
CIRCLING	1840-1¼ 996 (1000-1¼)	1840-1½ 996 (1000-1½)	1840-3 996 (1000-3)	NA
ALENK FIX MINIMUMS (DUAL ADF REQUIRED)				
S-22	1340-1	499 (500-1)	1340-1¼ 499 (500-1¼)	NA
CIRCLING	1360-1	516 (600-1)	1360-1½ 516 (600-1½)	NA

NDB RWY 22