

WINTER HAVEN, FLORIDA

AL-5953 (FAA)

VORTAC LAL <b>116.0</b> Chan <b>107</b>	APP CRS <b>071°</b>	Rwy Idg TDZE Apt Elev	<b>N/A</b> <b>N/A</b> <b>145</b>
---	------------------------	-----------------------------	--

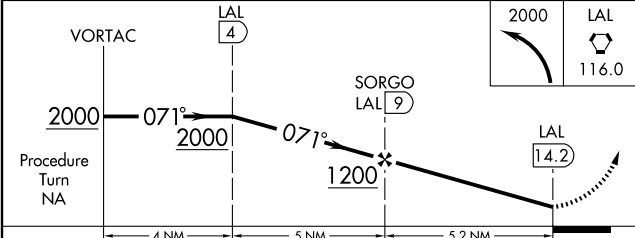
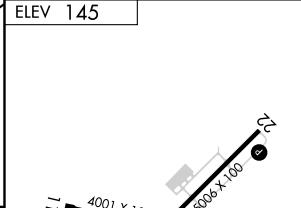
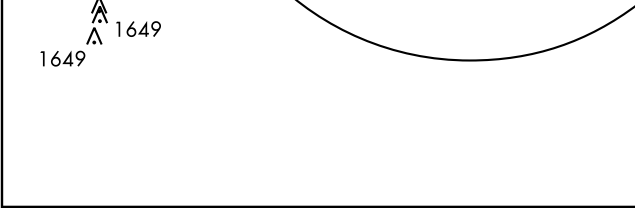
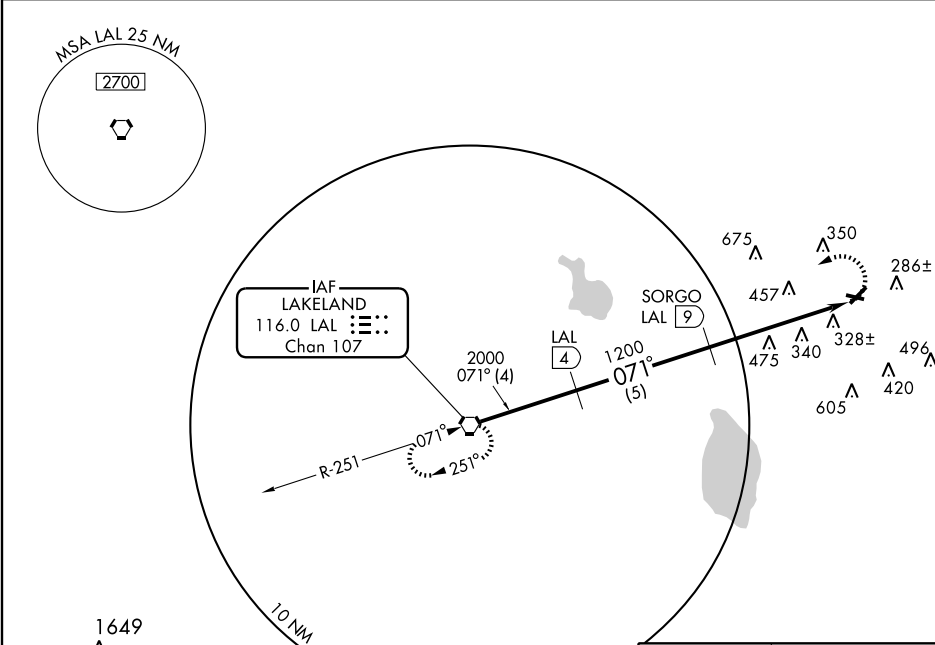
# VOR/DME-A

WINTER HAVEN'S GILBERT (GIF)

**▲**  
**▲**

MISSED APPROACH: Climbing left turn to 2000 direct LAL VORTAC and hold.

ASOS <b>133.675</b>	TAMPA APP CON <b>120.65 290.3</b>	UNICOM <b>123.05 (CTAF)</b> <b>0</b>
------------------------	--------------------------------------	---



CATEGORY	A	B	C	D
CIRCLING	780-1	635 (700-1)	780-1¼ 635 (700-1¼)	820-2¼ 675 (700-2¼)

REIL Rwy 4 and 22  
MIRL Rwy 4-22 **0**

SE-3, 22 OCT 2009 to 19 NOV 2009

SE-3, 22 OCT 2009 to 19 NOV 2009

WINTER HAVEN, FLORIDA  
Amdt 6A 09239

28° 04' N - 81° 45' W

WINTER HAVEN'S GILBERT (GIF)  
VOR/DME-A