

ELKIN, NORTH CAROLINA

AL-5952 (FAA)

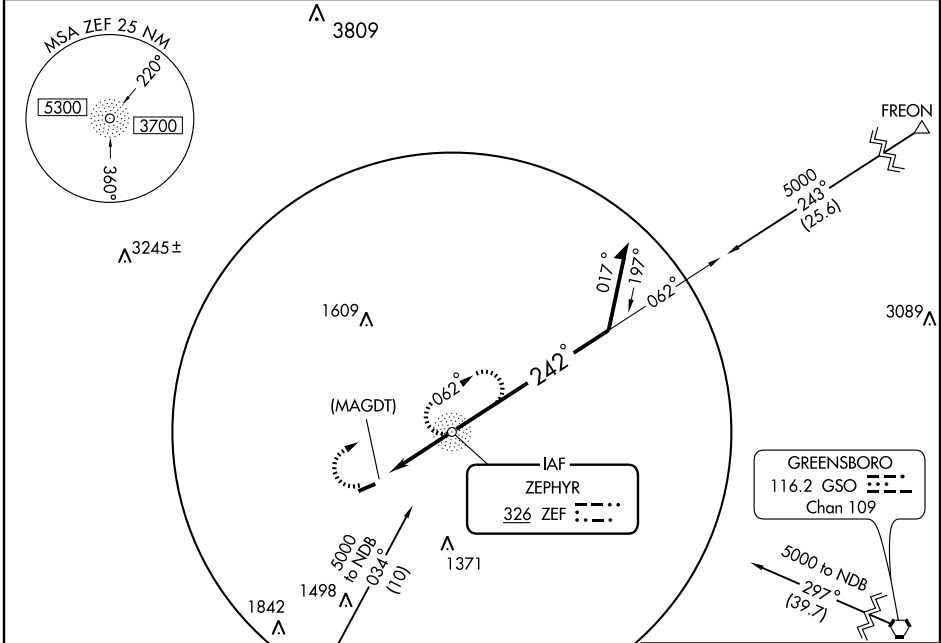
NDB or GPS RWY 25

ELKIN MUNI (ZEF)

NDB ZEF 326	APP CRS 242°	Rwy Idg TDZE Apt Elev	4003 1065 1068
-----------------------	------------------------	-----------------------------	---

▼ Use Winston-Salem, NC altimeter setting. **▲** NA MISSED APPROACH: Climbing right turn to 4000 direct to ZEF NDB and hold.

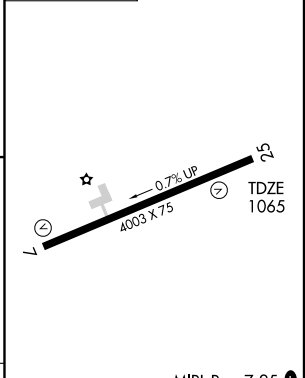
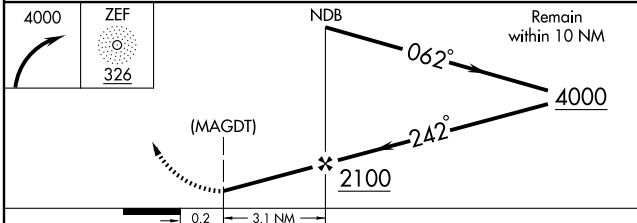
ATLANTA CENTER **125.15 263.0** UNICOM **123.05 (CTAF)**



SE-2, 22 OCT 2009 to 19 NOV 2009

SE-2, 22 OCT 2009 to 19 NOV 2009

ELEV 1068



CATEGORY	A	B	C	D
S-25	1700-1	635 (700-1)	1700-1¼ 635 (700-1¼)	1700-2 635 (700-2)
CIRCLING	1700-1	632 (700-1)	1700-1¼ 632 (700-1¼)	1700-2 652 (700-2)

MIRL Rwy 7-25 **Ⓢ**
REIL Rwy 25 **Ⓢ**

FAF to MAP 3.1 NM

Knots	60	90	120	150	180
Min:Sec	3:06	2:04	1:33	1:14	1:02

ELKIN, NORTH CAROLINA
Amdt 1 03079

36°17'N-80°47'W

NDB or GPS RWY 25