

RNAV (GPS) RWY 23

AMERICUS/SOUTHER FIELD (A.C.J)

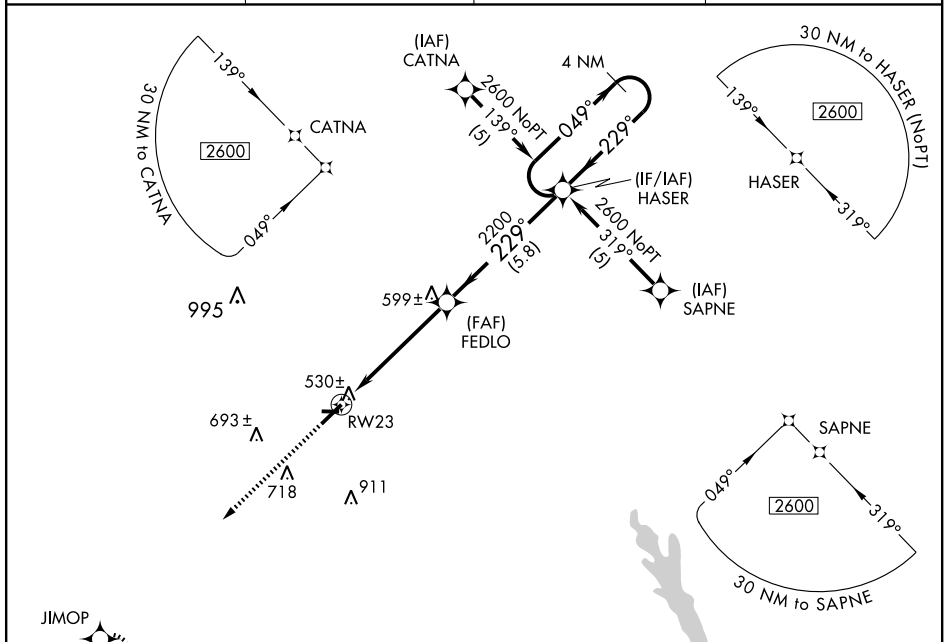
APP CRS	Rwy Idg	6021
229°	TDZE	464
	Apt Elev	471

⚠ For uncompensated Baro-VNAV systems, LNAV/VNAV NA below -15°C (5°F) or above 48°C (118°F).
⚠ NA DME/DME RNP-0.3 NA. Inoperative table does not apply.

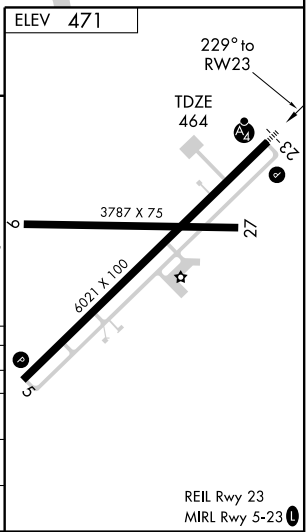
MALSF

MISSED APPROACH: Climb to 2600 direct JIMOP WP and hold.

AWOS-3 128.375	ATLANTA APP CON * 125.5 323.1	ATLANTA CLNC DEL 119.95	UNICOM 122.8 (CTAF) 0
---------------------------------	--	--	--



CATEGORY	A	B	C	D
	900-1¼ 429 (500-1¼)	940-1¼ 469 (500-1¼)	940-1½ 469 (500-1½)	1040-2 569 (600-2)
GLS PA DA	NA			
LNAV/VNAV DA	830-1¼ 366 (400-1¼)			
LNAV MDA	840-1 376 (400-1)		840-1¼ 376 (400-1¼)	



SE-4, 22 OCT 2009 to 19 NOV 2009

SE-4, 22 OCT 2009 to 19 NOV 2009