

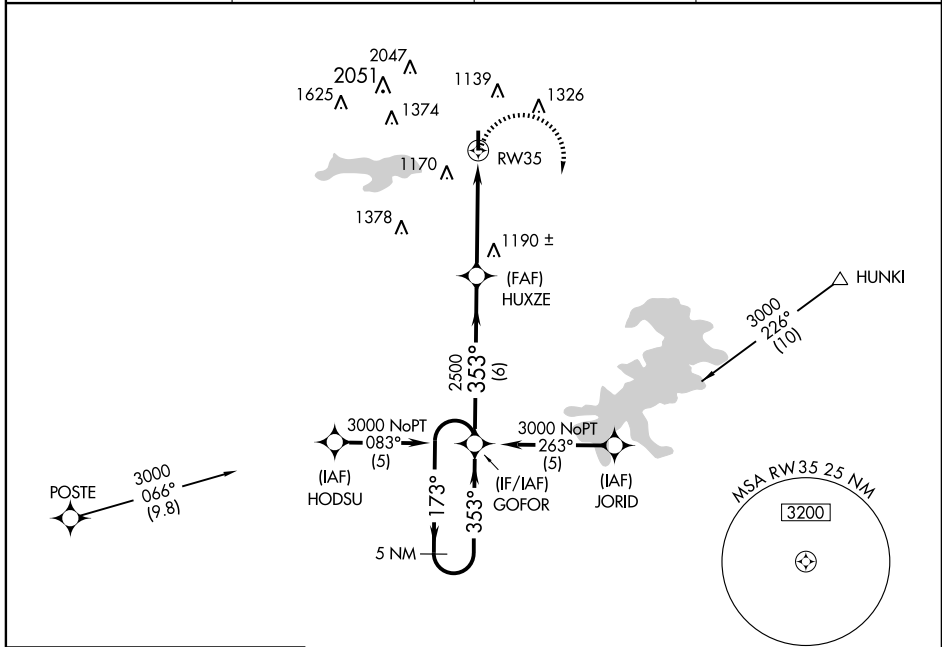
RNAV (GPS) RWY 35

WICHITA FALLS/ KICKAPOO DOWNTOWN (CWC)

NDB SKB 344	APP CRS 353°	Rwy ldg 4200
		TDZE 998
		Apt Elev 1003

<p>▽ Use Sheppard AFB/Wichita Falls Muni altimeter setting. DME/DME RNP-0.3 not authorized.</p> <p>▲ NA</p>	<p>MISSED APPROACH: Climbing right turn to 3000 direct GOFOR and hold.</p>
---	---

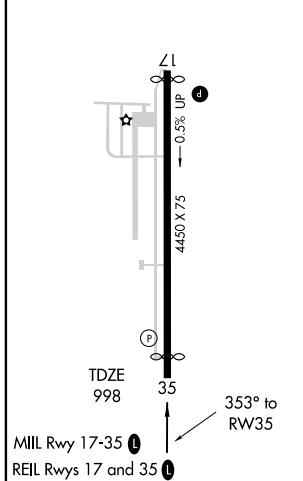
AWOS-3 119.625	SHEPPARD APP CON* 120.4 269.025	CLNC DEL 121.2	UNICOM 122.7 (CTAF) 0
--------------------------	---	--------------------------	---------------------------------



SC-2, 22 OCT 2009 to 19 NOV 2009

SC-2, 22 OCT 2009 to 19 NOV 2009

ELEV 1003	Rwy 17 ldg 4300
	Rwy 35 ldg 4200



Procedure not authorized for arrivals at POSTE via V77 southwest bound.
 Procedure not authorized for arrivals at POSTE via V278 westbound.

	5 NM Holding Pattern			
	GS 3.04° TCH 40			
CATEGORY	A	B	C	D
LNAV MDA	1460-1	462 (500-1)	1460-1¼ 462 (500-1¼)	NA
CIRCLING	1500-1	497 (500-1)	1500-1½ 497 (500-1½)	NA