

RNAV (GPS) RWY 28

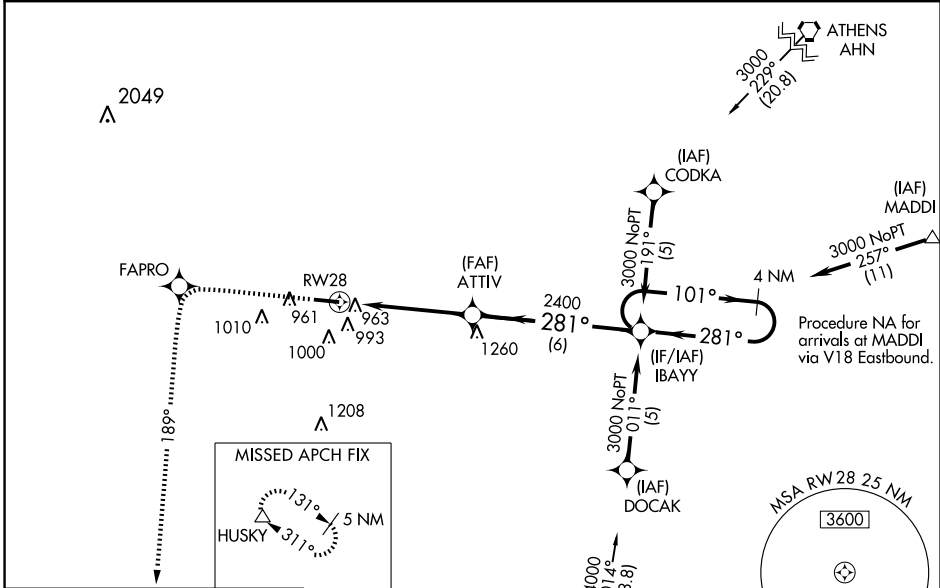
COVINGTON MUNI (9A1)

WAAS CH 72710 W28A	APP CRS 281°	Rwy Idg TDZE Apt Elev	5500 809 809
--	------------------------	-----------------------------	---

Baro-VNAV NA when using Lawrenceville altimeter setting. For uncompensated Baro-VNAV systems, LNAV/VNAV NA below -16°C (4°F) or above 47°C (116°F). DME/DME RNP-0.3 NA. Visibility reduction by helicopters NA. When local altimeter setting not received, use Lawrenceville altimeter setting and increase all DA 85 ft, all MDA 100 ft, LPV visibility ¼ mile, LNAV/VNAV visibility ½ mile, LNAV Cat. C and D visibility ¼ mile, and Circling Cat. C visibility ¼ mile. VDP NA when using Lawrenceville altimeter setting.

MISSED APPROACH:
Climb to 3000 direct FAPRO and left turn via 189° track to HUSKY and hold.

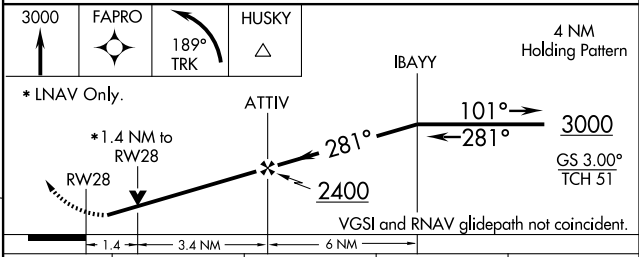
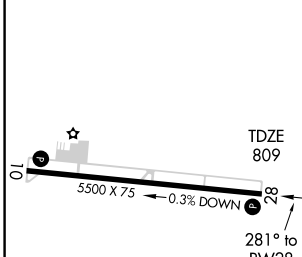
AWOS-3 118.725	ATLANTA APP CON 128.575 381.65	CLNC DEL 119.875	UNICOM 123.0 (CTAF) 0
--------------------------	--	----------------------------	---------------------------------



SE-4, 22 OCT 2009 to 19 NOV 2009

SE-4, 22 OCT 2009 to 19 NOV 2009

ELEV 809



CATEGORY	A	B	C	D
LPV DA	1118-1 309 (400-1)			
LNAV/VNAV DA	1263-1½ 454 (500-1½)			
LNAV MDA	1280-1	471 (500-1)	1280-1¼ 471 (500-1¼)	1280-1½ 471 (500-1½)
CIRCLING	1300-1 491 (500-1)	1360-1 551 (600-1)	1360-1½ 551 (600-1½)	1360-2 551 (600-2)