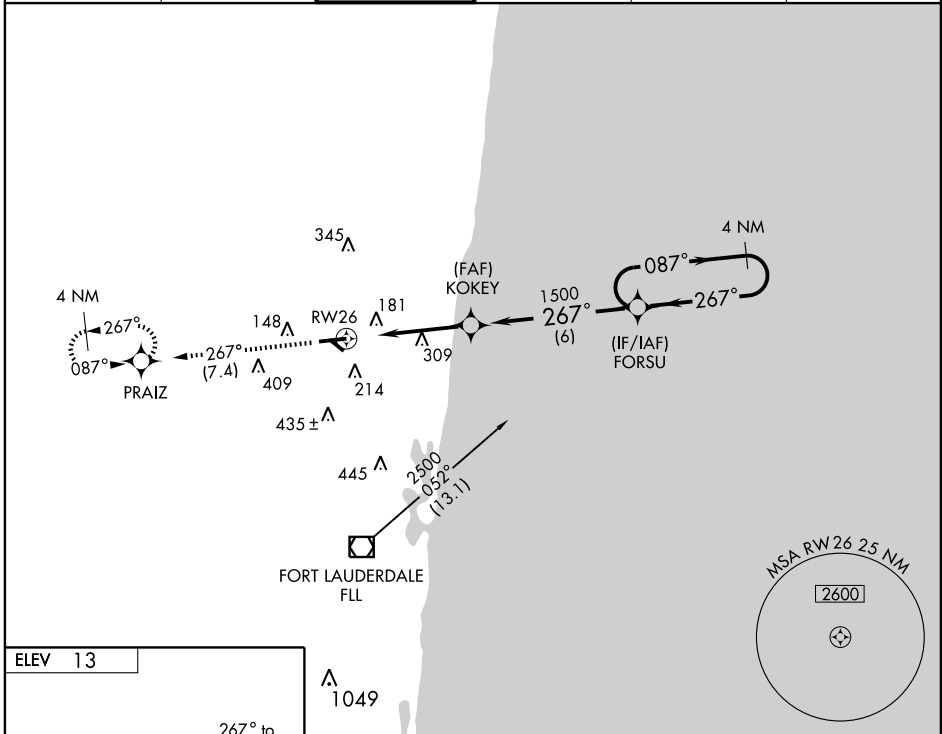


# RNAV (GPS) RWY 26

FORT LAUDERDALE EXECUTIVE (FXE)

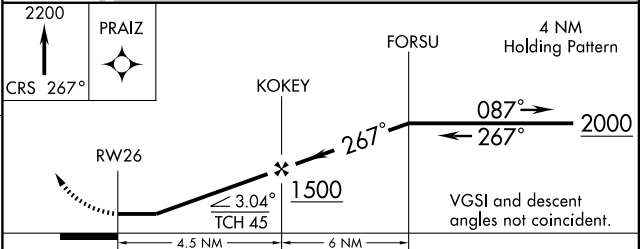
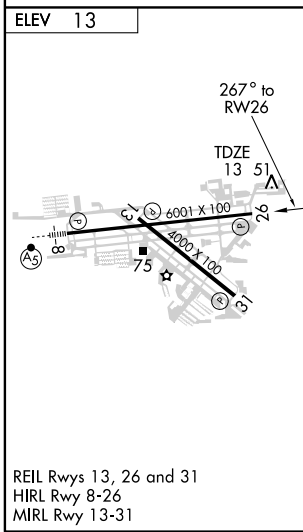
APP CRS <b>267°</b>	Rwy Idg <b>6001</b>
	TDZE <b>13</b>
	Apt Elev <b>13</b>

<p><b>▽</b> GPS or RNP-0.3 Required. <b>△</b> NA DME/DME RNP-0.3 NA.</p>		<p>MISSED APPROACH: Climb to 2200 via 267° course to PRAIZ WP and hold.</p>			
ATIS <b>119.85</b>	MIAMI APP CON <b>119.7 306.3</b>	<b>EXECUTIVE TOWER</b> <b>120.9 239.3</b>	GND CON <b>121.75</b>	CLNC DEL <b>127.95</b>	UNICOM <b>122.95</b>



SE-3, 22 OCT 2009 to 19 NOV 2009

SE-3, 22 OCT 2009 to 19 NOV 2009



CATEGORY	A	B	C	D
GLS PA DA	NA			
LNAV/VNAV DA	NA			
LNAV MDA	620-1	607 (700-1)	620-1 <sup>3</sup> / <sub>4</sub> 607 (700-1 <sup>3</sup> / <sub>4</sub> )	620-2 607 (700-2)
CIRCLING	620-1	607 (700-1)	620-1 <sup>3</sup> / <sub>4</sub> 607 (700-1 <sup>3</sup> / <sub>4</sub> )	620-2 607 (700-2)