

# RNAV (GPS) RWY 15

DE QUINCY INDUSTRIAL AIRPARK (5R8)

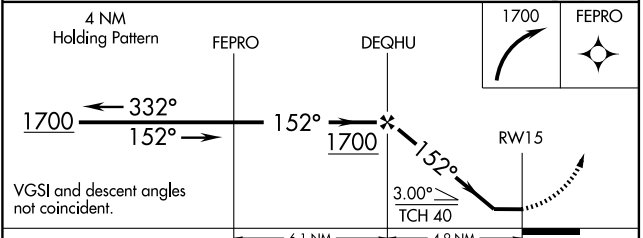
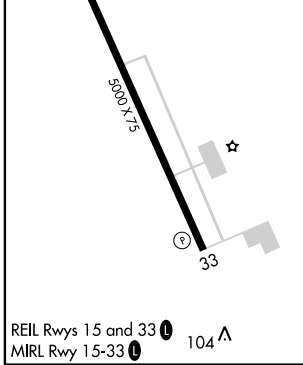
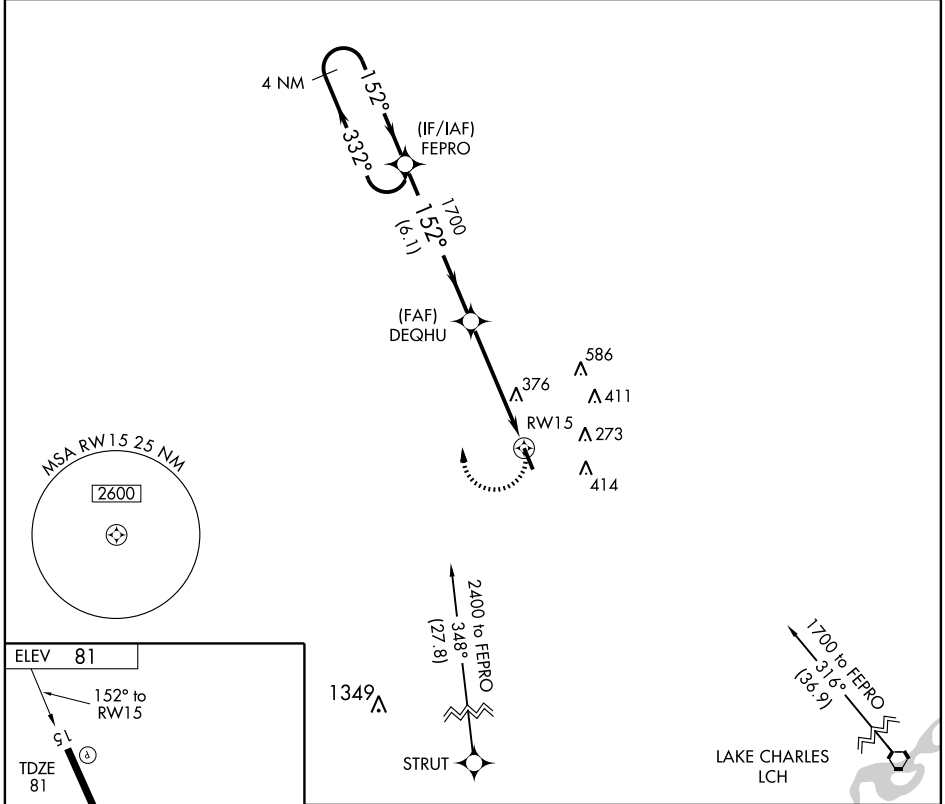
APP CRS	Rwy Idg	<b>5000</b>
<b>152°</b>	TDZE	<b>81</b>
	Apt Elev	<b>81</b>

**▲ NA** DME/DME RNP-0.3 NA. If local altimeter setting not received, use Lake Charles Regional altimeter setting and increase all MDAs 80 feet.

**MISSED APPROACH:** Climbing right turn to 1700 direct FEPRO WP and hold.

LAKE CHARLES APP CON \*  
**119.35 282.3**

UNICOM  
**122.8 (CTAF) ①**



CATEGORY	A	B	C	D
LNAV MDA	640-1	559 (600-1)	640-1½ 559 (600-1½)	NA
CIRCLING	640-1	559 (600-1)	640-1½ 559 (600-1½)	NA

SC-4, 22 OCT 2009 to 19 NOV 2009

SC-4, 22 OCT 2009 to 19 NOV 2009