

TERRE HAUTE, INDIANA

AL-5939 (FAA)

VOR or GPS-A  
TERRE HAUTE/SKY KING (3I3)

|   |                        |                             |  |
|---|------------------------|-----------------------------|--|
| VORTAC TTH<br><b>115.3</b><br>Chan <b>100</b> | APP CRS<br><b>300°</b> | Rwy Idg<br>TDZE<br>Apt Elev | <b>N/A</b><br><b>N/A</b><br><b>496</b> |
|---|------------------------|-----------------------------|--|

Use Terre Haute Intl altimeter setting.  
Procedure NA at night.

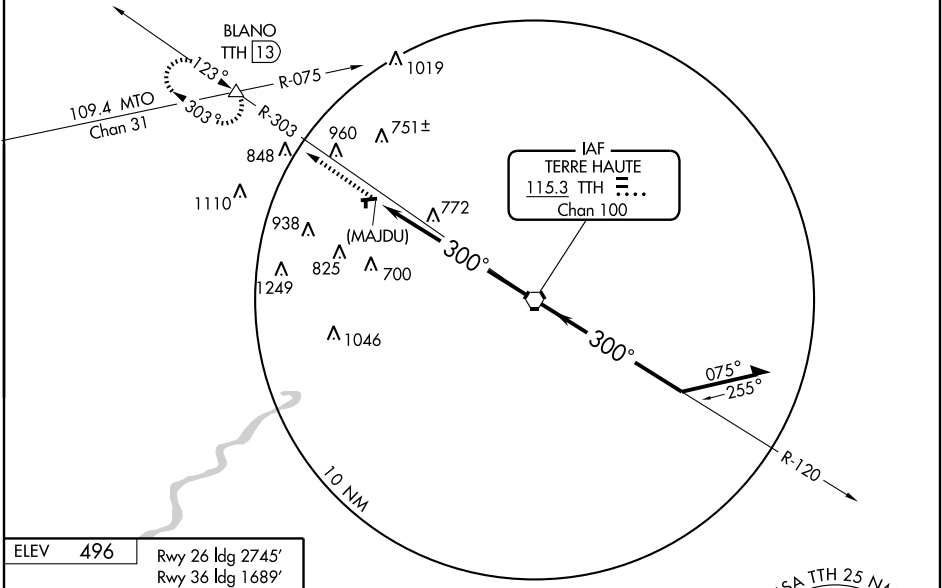
MISSED APPROACH: Climb to 2500 via TTH R-303 to BLANO Int/TTH 13 DME and hold.

HULMAN APP CON★  
**125.45 339.8**

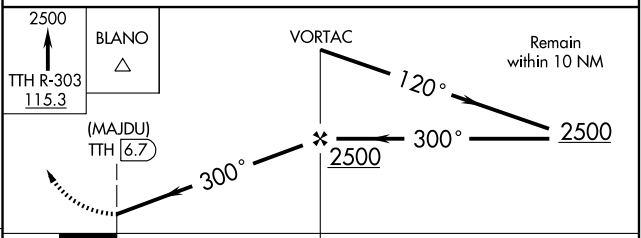
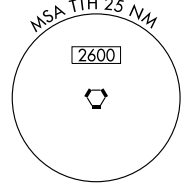
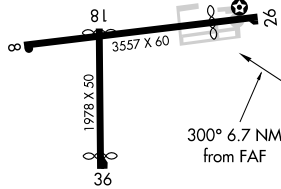
UNICOM  
**122.8** (CTAF) **0**

EC-2, 22 OCT 2009 to 19 NOV 2009

EC-2, 22 OCT 2009 to 19 NOV 2009



|      |     |                  |
|------|-----|------------------|
| ELEV | 496 | Rwy 26 Idg 2745' |
|      |     | Rwy 36 Idg 1689' |
|      |     | Rwy 18 Idg 1928' |



LIRL Rwy 8-26 and 18-36 **0**

FAF to MAP 6.7 NM

|         |      |      |      |      |      |          |        |             |   |    |
|---------|------|------|------|------|------|----------|--------|-------------|---|----|
| Knots   | 60   | 90   | 120  | 150  | 180  | CATEGORY | A      | B           | C | D  |
| Min:Sec | 6:42 | 4:28 | 3:21 | 2:41 | 2:14 | CIRCLING | 1100-1 | 604 (700-1) |   | NA |

TERRE HAUTE, INDIANA  
Amdt 6A 06103

39°33'N - 87°23'W

TERRE HAUTE/SKY KING (3I3)  
VOR or GPS-A