

VORTAC TTH 115.3 Chan 100	APP CRS 120°	Rwy Idg TDZE Apt Elev N/A N/A 496
---	------------------------	---

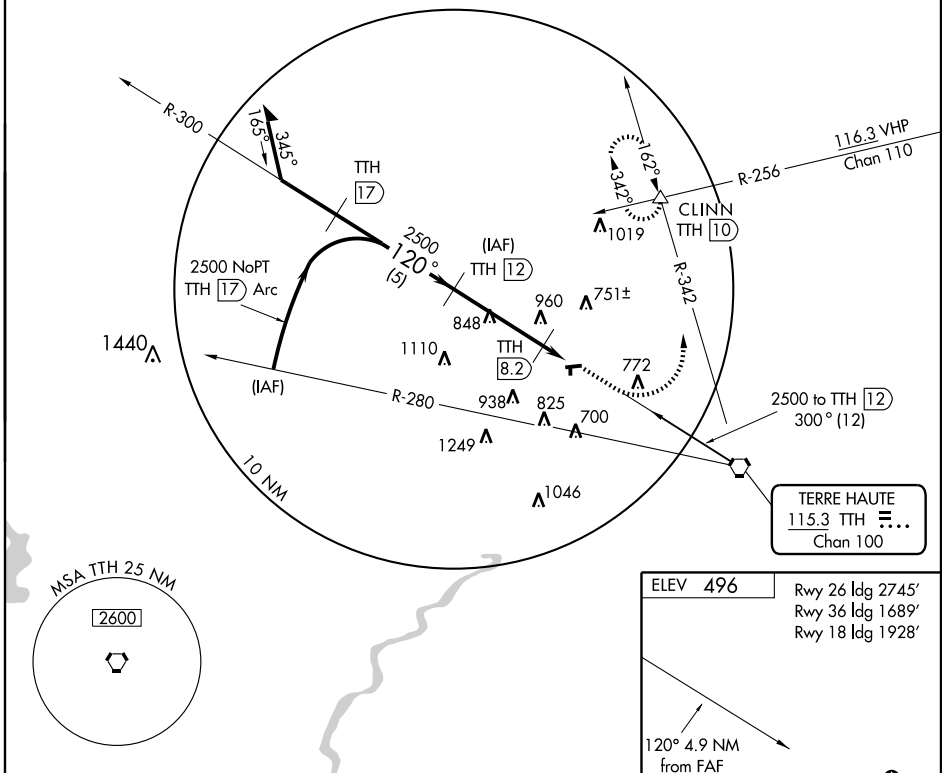
▼ Use Terre Haute Intl altimeter setting.
▲ NA Procedure NA at night.

MISSED APPROACH: Climb to 1500 then climbing left turn to 2500 via TTH R-342 to CLINN Int and hold.

HULMAN APP CON ★
125.45 339.8

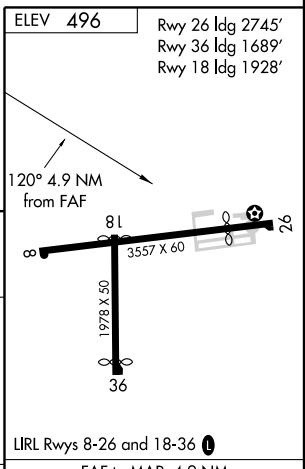
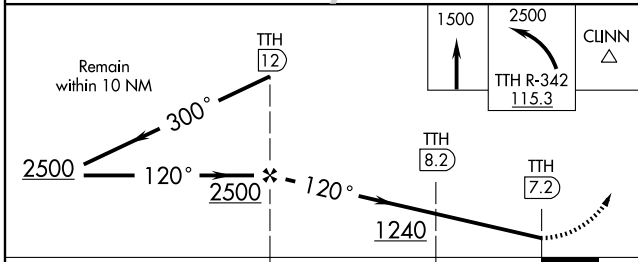
UNICOM
122.8 (CTAF) **0**

DME REQUIRED



EC-2, 22 OCT 2009 to 19 NOV 2009

EC-2, 22 OCT 2009 to 19 NOV 2009



CATEGORY	A	B	C	D	Knots	60	90	120	150	180
CIRCLING	1100-1	604 (700-1)		NA	Min:Sec	4:54	3:16	2:27	1:58	1:38