

OROVILLE, CALIFORNIA

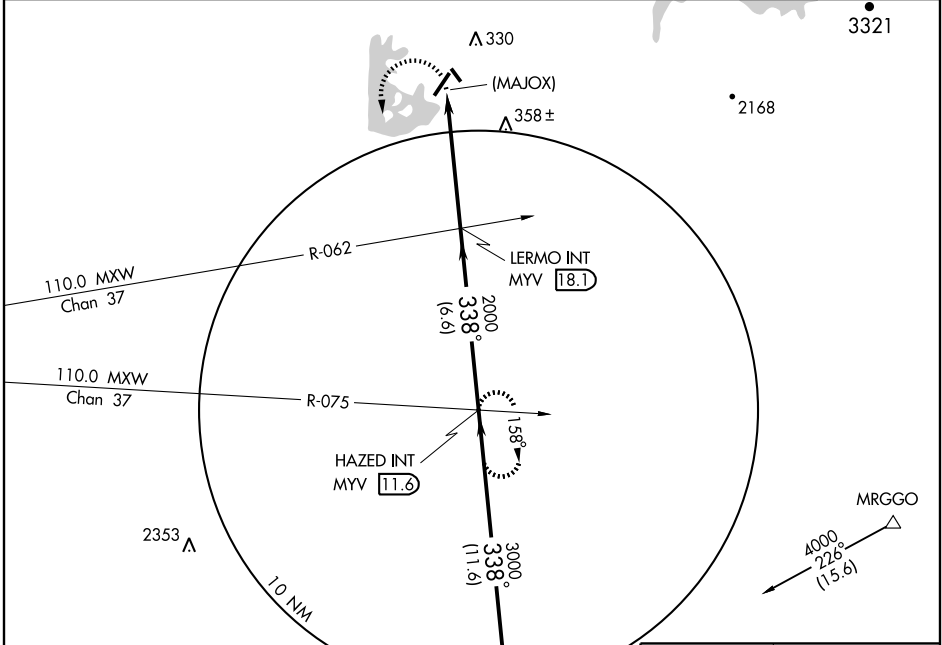
AL-5938 (FAA)

VORTAC MYV <b>110.8</b> Chan <b>45</b>	APP CRS <b>338°</b>	Rwy Idg TDZE Apt Elev <b>N/A</b> <b>N/A</b> <b>194</b>
--	------------------------	---

**VOR or GPS-A**  
OROVILLE MUNI (OVE)

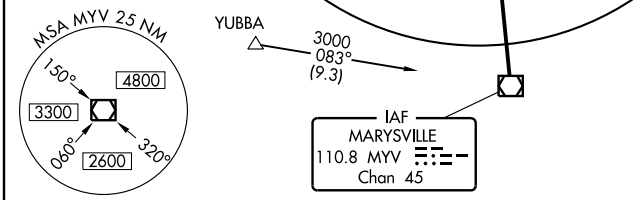
**NA** Circling not authorized Northeast Rwy 12-30  
**MISSED APPROACH:** Climbing left turn to 3000 via MYV R-338 to HAZED Int/MYV 11.6 DME and hold.

ASOS <b>121.425</b>	NORCAL APP CON <b>125.4 259.1</b>	UNICOM <b>122.8 (CTAF)</b>
------------------------	--------------------------------------	-------------------------------

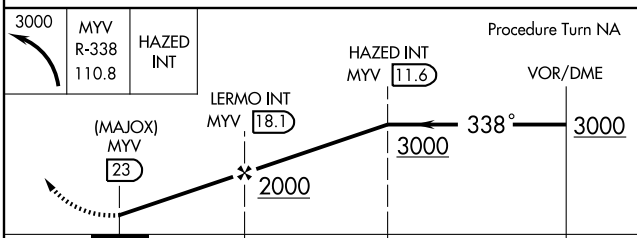
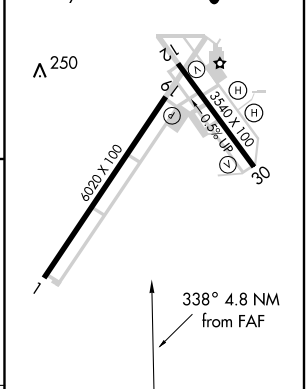


SW-2, 22 OCT 2009 to 19 NOV 2009

SW-2, 22 OCT 2009 to 19 NOV 2009



**ELEV 194**  
HIRL Rws 1-19 and 12-30



CATEGORY	A	B	C	D
CIRCLING	620-1 426 (500-1)	660-1 466 (500-1)	660-1½ 466 (500-1½)	NA

FAF to MAP 4.8 NM					
Knots	60	90	120	150	180
Min:Sec	4:48	3:12	2:24	1:55	1:36

OROVILLE, CALIFORNIA  
Amdt 6A 09267

39°29'N-121°37'W

OROVILLE MUNI (OVE)  
**VOR or GPS-A**