

HALEYVILLE, ALABAMA

AL-5937 (FAA)

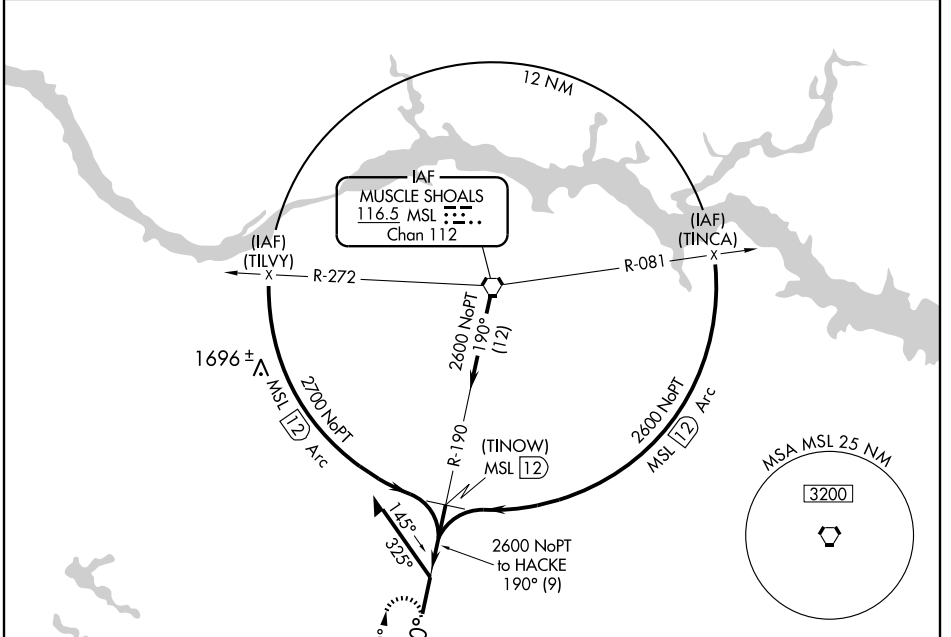
VORTAC MSL <b>116.5</b> Chan 112	APP CRS <b>190°</b>	Rwy Idg TDZE Apt Elev	<b>5008</b> <b>930</b> <b>930</b>
--	------------------------	-----------------------------	---

# VOR/DME or GPS RWY 18

HALEYVILLE / POSEY FIELD (1M4)

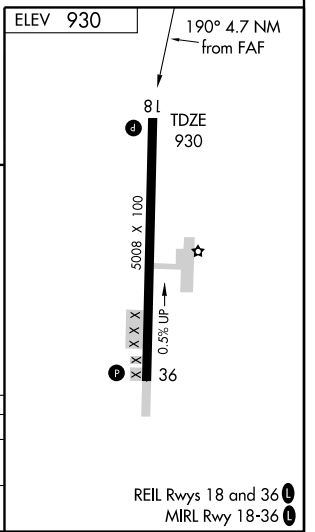
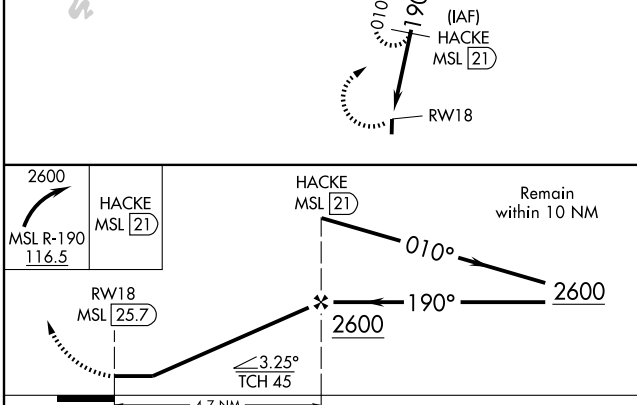
**▼** Use Muscle Shoals altimeter setting.  
**▲ NA** MISSED APPROACH: Climbing right turn to 2600 via MSL R-190 to HACKE MSL 21 DME and hold.

ASOS <b>119.525</b>	MEMPHIS CENTER <b>120.8 307.0</b>	UNICOM <b>122.8 (CTAF)</b>
------------------------	--------------------------------------	-------------------------------



SE-4, 22 OCT 2009 to 19 NOV 2009

SE-4, 22 OCT 2009 to 19 NOV 2009



CATEGORY	A	B	C	D
S-18	1520-1 590 (600-1)	1520-1¼ 590 (600-1¼)	1520-1½ 590 (600-1½)	NA
CIRCLING	1540-1 610 (700-1)	1540-1¼ 610 (700-1¼)	1540-1¾ 610 (700-1¾)	NA

HALEYVILLE, ALABAMA  
Amdt 4A 09239

34°17'N - 87°36'W

# VOR/DME or GPS RWY 18

HALEYVILLE / POSEY FIELD (1M4)