

LANCASTER, TEXAS

AL-5936 (FAA)

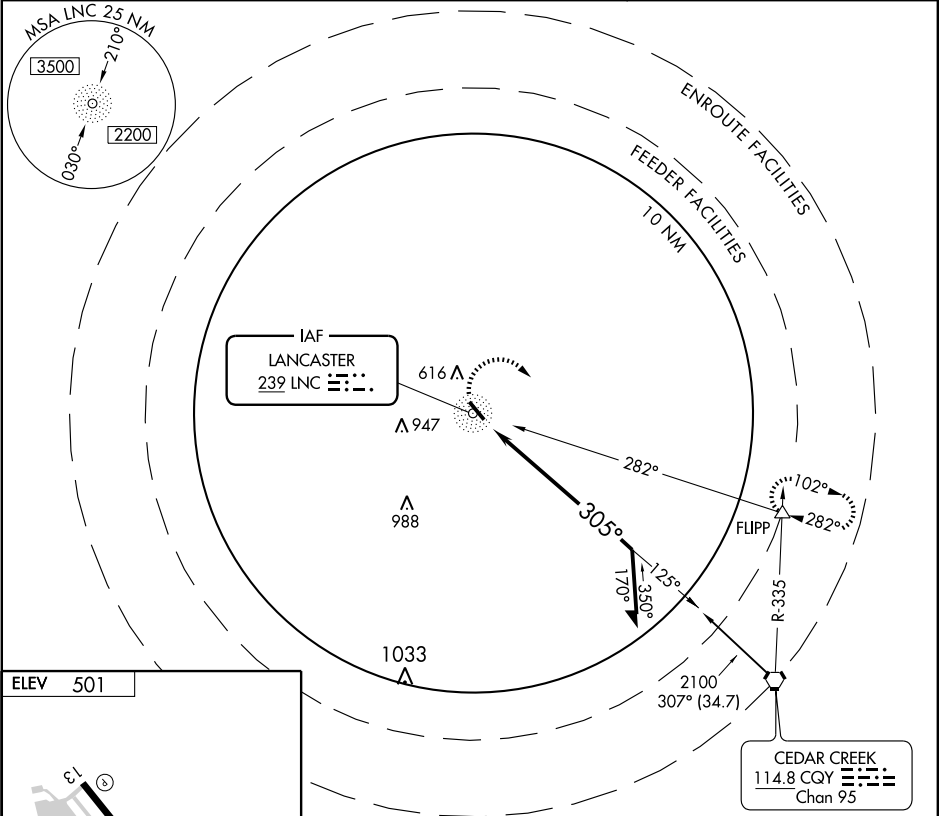
NDB LNC <b>239</b>	APP CRS <b>305°</b>	Rwy Idg TDZE Apt Elev	<b>4999</b> <b>492</b> <b>501</b>
-----------------------	------------------------	-----------------------------	-----------------------------------------

# NDB RWY 31

LANCASTER (LNC)

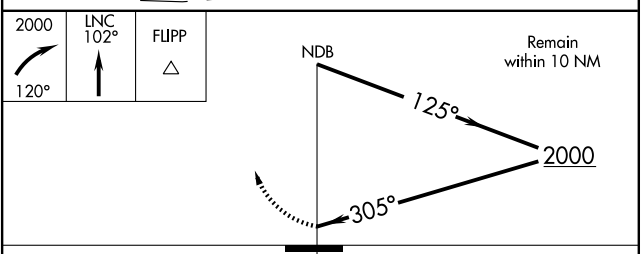
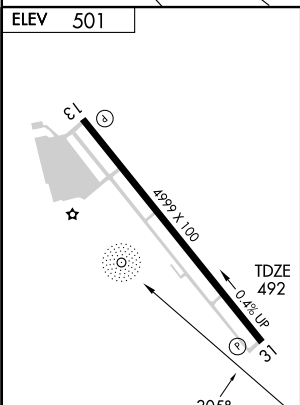
▼ If local altimeter setting not received, use Dallas-Love Field altimeter setting and increase all MDA's 60 feet. MISSED APPROACH: Climbing right turn to 2000 via heading 120° and 102° bearing from LNC NDB to FLIPP Int and hold.

AWOS-3 <b>118.975</b>	REGIONAL APP CON <b>125.2 343.65</b>	UNICOM <b>122.7 (CTAF)</b>
--------------------------	-----------------------------------------	-------------------------------



SC-2, 22 OCT 2009 to 19 NOV 2009

SC-2, 22 OCT 2009 to 19 NOV 2009



CATEGORY	A	B	C	D
	S-31	1080-1 588 (600-1)		NA
CIRCLING	1080-1	579 (600-1)		NA

LANCASTER, TEXAS  
Amdt 2 04218

32°35'N-96°43'W

# LANCASTER (LNC) NDB RWY 31